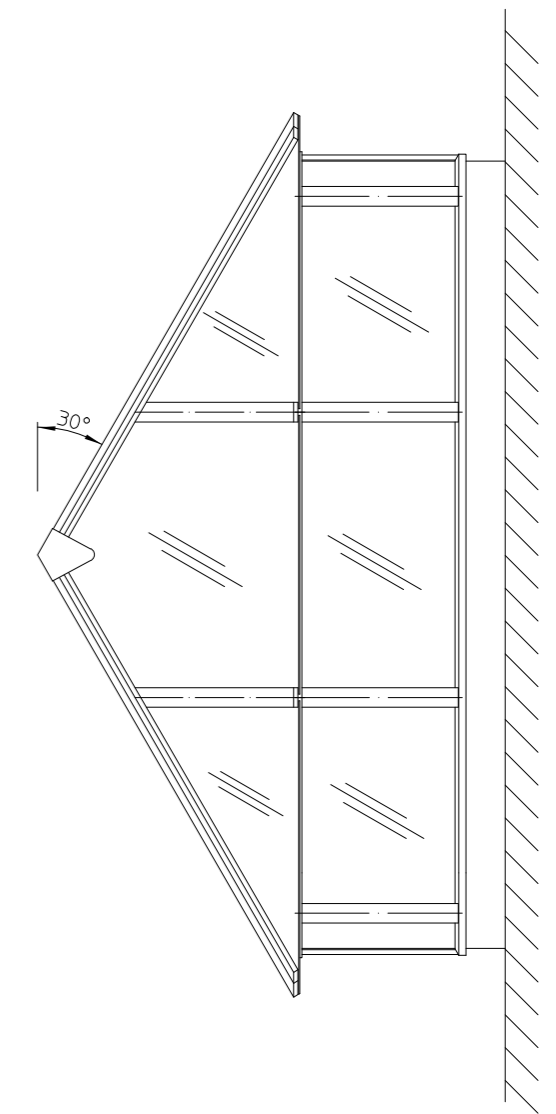
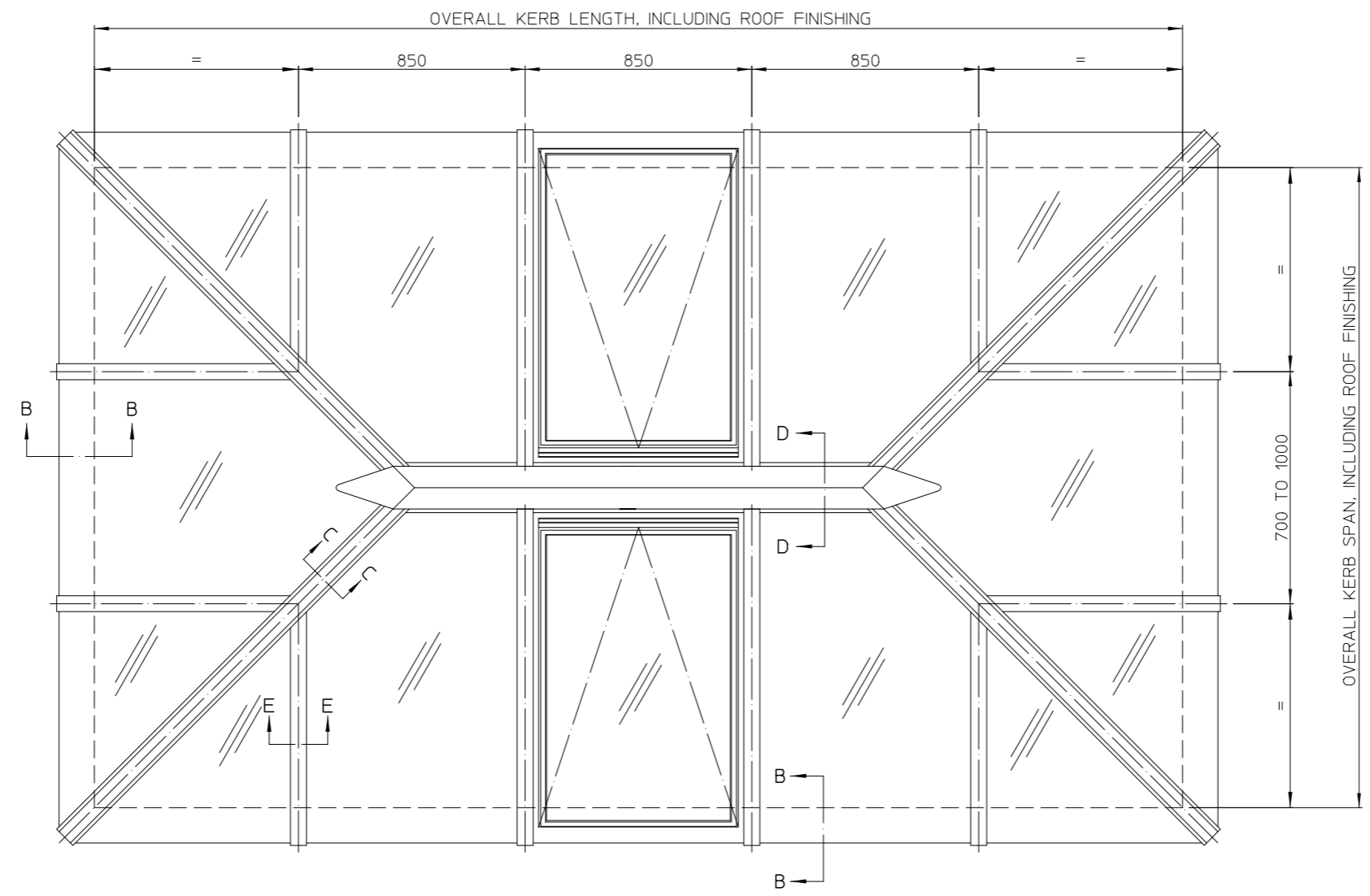
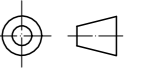
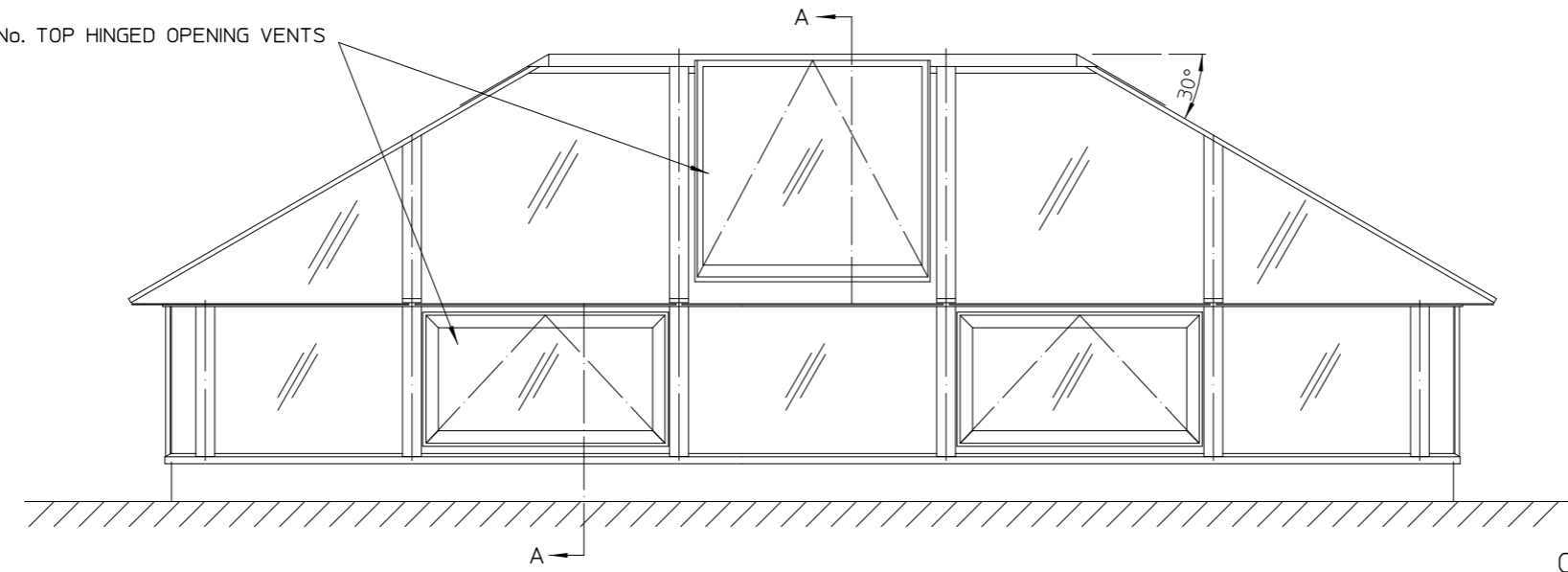


IF IN DOUBT ASK DO NOT SCALE



PLAN VIEW

6 No. TOP HINGED OPENING VENTS



SIDE ELEVATION

GLAZING SPECIFICATION:
 OUTER SKIN: 4mm CLEAR TOUGHENED GLASS
 CAVITY: 16mm ARGON FILLED
 INNER SKIN: 6.4mm CLEAR LAMINATED GLASS
 WITH LOW-E COATING
 LANTERN UPSTAND CAVITY: 14mm ARGON FILLED

STANDARD DESIGN LOAD: 750 N/M²

OPENING VENTS ARE EACH OPERATED BY
 1 No. 230vAC CHAIN LINK ACTUATOR.
 A CONTROL UNIT COMPLETE WITH TEMPERATURE,
 WIND & RAIN SENSORS IS AN OPTIONAL EXTRA.
 ELECTRICAL INSTALLATION NOT BY ROOFGLAZE.

THIS DRAWING MUST NOT BE COPIED OR PASSED TO A THIRD PARTY WITHOUT WRITTEN CONSENT FROM ROOFGLAZE LIMITED.	CHECKED	TOLERANCE UNLESS OTHERWISE STATED	MATERIAL						
	DATE	±3	ALUMINIUM GLASS						
	DRAWN R. PADDICK	DIMENSIONS IN MM	FINISH POLYESTER POWDER COATING						
DATE 5-Dec-2008	SCALE 1:12 @ A1								
				REV	AMENDMENTS	SIGNED	CHECKED	DATE	

Roofglaze Limited,
 Unit 4, Little End Road, Eaton Socon, St Neots, Cambs, PE19 8JH
 Telephone 01480 474797. Fax 01480 474774.
 E-mail technical@roofglaze.co.uk

ROOFGLAZE

TITLE: RG-60 LANTERN RIDGELIGHT WITH VENTILATION OPTION
 QUOTE N°. A1
 DRAWING N°. RG-60-104
 SHEET 1 OF 2