

NOTES

X NUMBER REQUIRED

GLASS SPEC:

OUTER : 6mm CLEAR HST TOUGHENED GLASS

CAVITY : 16mm ARGON FILLED + WARM EDGE SPACER + DC3363 UV

RESISTANT SILICONE EDGE SEAL

MIDDLE: 6mm CLEAR HST TOUGHENED GLASS + LOW E

COATING

CAVITY : 16mm ARGON FILLED + WARM EDGE SPACER + DC3363 UV

RESISTANT SILICONE EDGE SEAL

INNER: 6mm CLEAR SHT TOUGHENED GLASS OR 9.5 CLEAR LAMINATED

GLASS + POLISHED EDGES + LOW E COATING

- LIGHT TRANSMISSION = 65 %
- CENTRE PANE U VALUE = 0.8 W/m².K
- SOLAR G VALUE = 0.46
- ACOUSTIC REDUCTION = 34 (6/6) 39 (6/8.8) RwdB
- AIR PERMEABILITY = CWCT CLASS A4
- WEATHER RESIANCE = CWCT CLASS A7
- WIND RESISTANCE = CWCT CLASS E2400
- WEIGHT = SIZE DEPENDENT
- DOWSIL 3363 UV RESISTANT SILICONE EDGE SEALS TO IGU
- DOWSIL 791 UV RESISTANT EDGE SEALS TO FRAME
- AA FIRE-RATED: AA DESIGNATION (NATIONAL CLASS) OR bROOF (T4) EUROPEAN CLASS AND EURO CLASS A1 NON-COMBUSTIBLE
- LOADS = 750N/m² WIND & 640N/m² SNOW

ROOFLIGHT ORDER SIZE = OVERALL FINISHED AND WEATHER KERB DIMS

GLASS BONDED TO FRAME WITH GLAZING SECURITY TAPE ILLBRUCK TN136

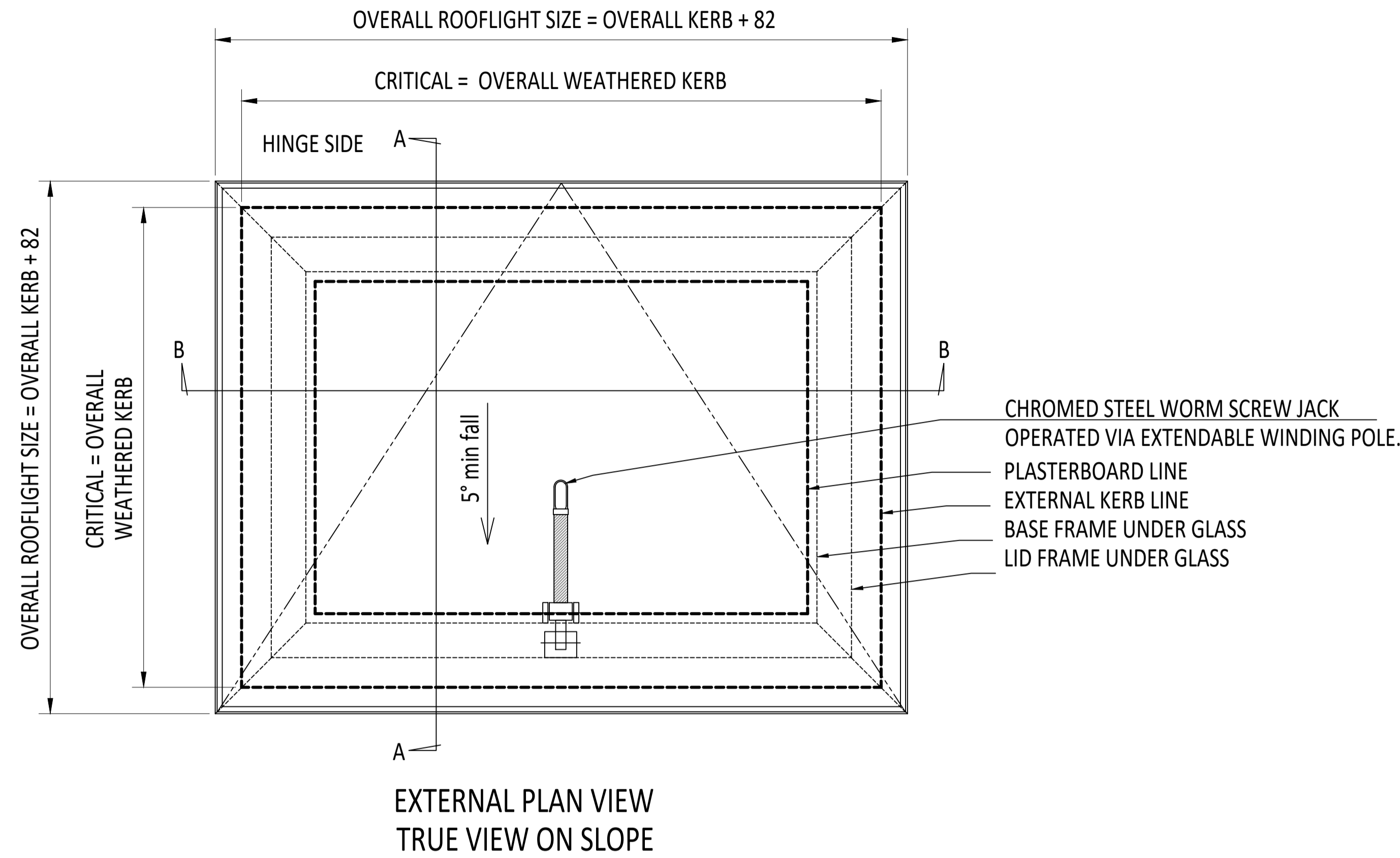
KERB DETAILS SHOWN INDICATIVE DETAILED DESIGN BY OTHERS

MIN. 5° FALL RECOMMENDED TO HELP SHED WATER. LARGER UNITS MAY REQUIRE STEEPER PITCHES. FINAL DECISION BY OTHERS.

PRODUCT U-VALUE = 1.7 W/m².K (SIZE DEPENDENT)

ROOFLIGHT OPERATED VIA A TELESCOPIC WINDING POLE & CHROME WORM SCREW.

HINGE SIDE SHOULD ALWAYS BE AT HIGH POINT OF KERB

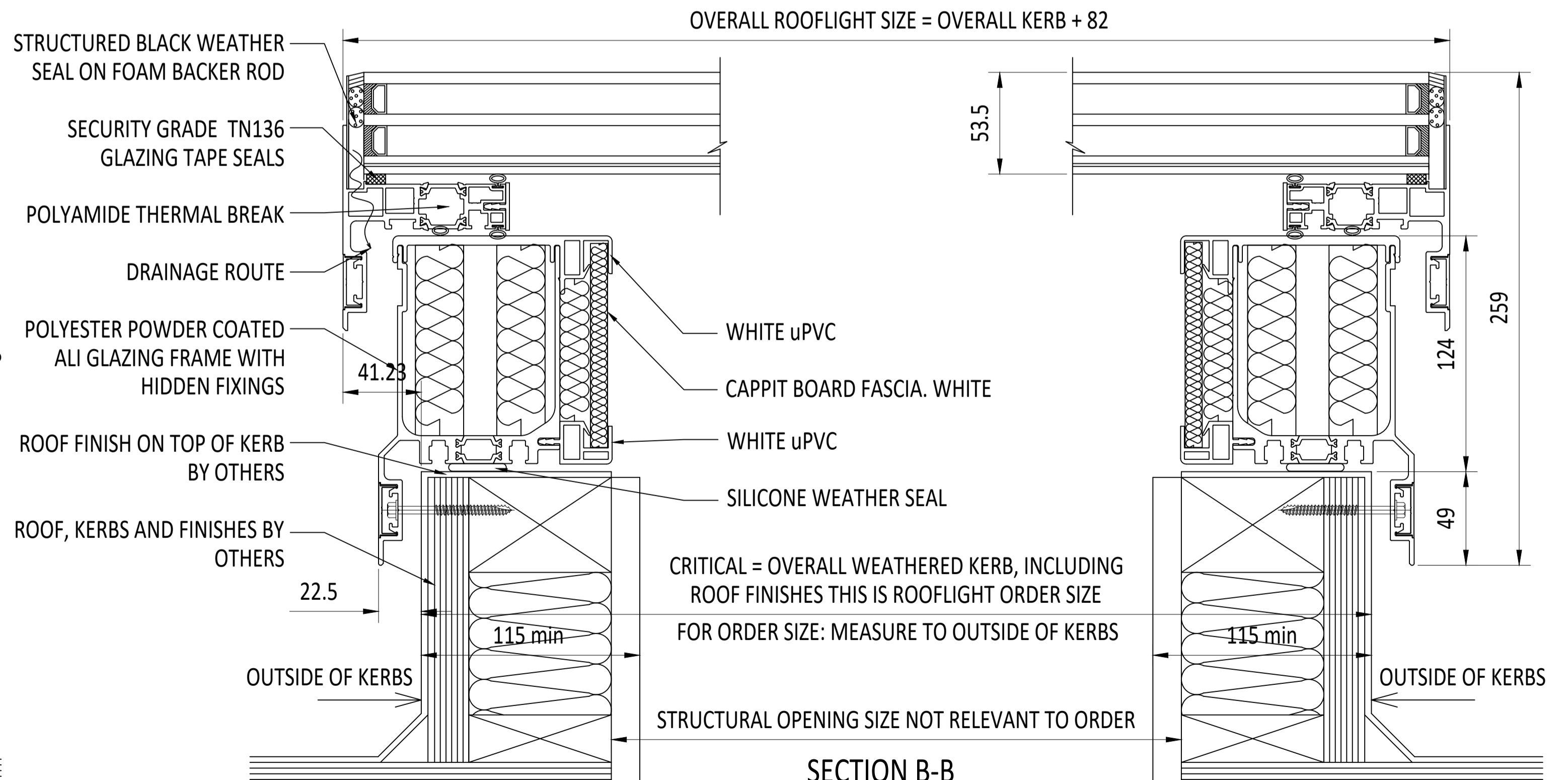
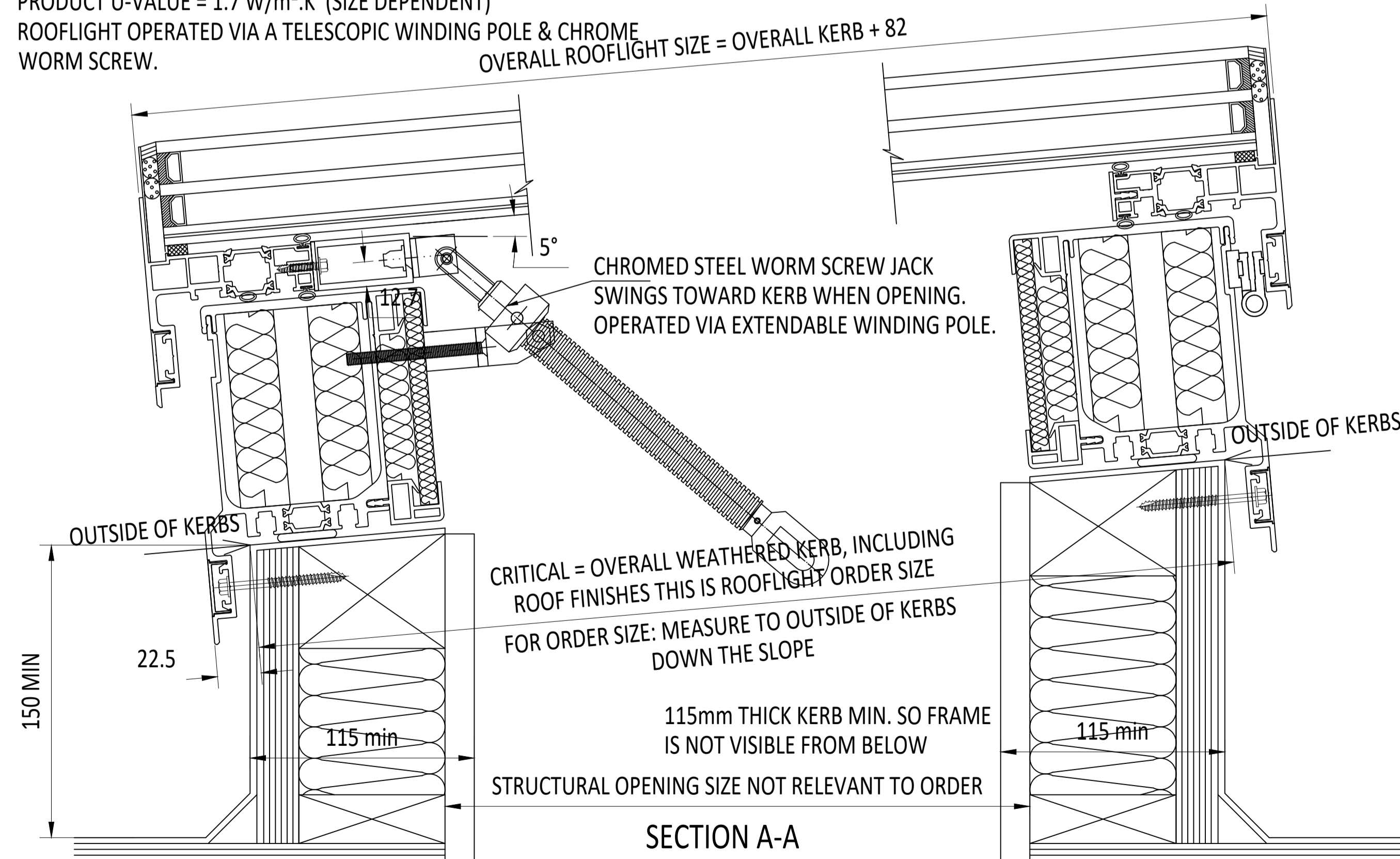


CDM :HAZARD IDENTIFICATION - HANDLING MATERIALS
 BE AWARE OF SHARP EDGES AND CORNERS WHEN HANDLING MATERIALS. MOST EDGES AND CORNERS WILL BE DEBURROD BUT THERE IS STILL A SMALL RISK. WEAR APPROPRIATE PPE REQUIRED FOR THE TASK. THE MHOR 1992 SET OUT A CLEAR RANKING OF MEASURES FOR DEALING WITH RISKS FROM MANUAL HANDLING. THESE ARE:
 • **FIRST** : AVOID HAZARDOUS MANUAL HANDLING OPERATIONS SO FAR AS IS REASONABLY PRACTICABLE;
 • **SECOND** : ASSESS ANY HAZARDOUS MANUAL HANDLING OPERATIONS THAT CANNOT BE AVOIDED; AND
 • **THIRD** : REDUCE THE RISK OF INJURY SO FAR AS IS REASONABLY PRACTICABLE.
 HAND PROTECTION (MANDATORY) TO: BS EN 388:1994.
 ROOFLIGHTS MUST ONLY BE INSTALLED BY COMPETENT CONTRACTORS.
 DANGER OF DAMAGING GLASS IF IT IS WALKED UPON. GLASS IS CLASSED AS NON-FRAGILE BUT SHOULD NOT BE WALKED ON. USE SPREADER BOARDS.
 REFER TO RISK ASSESSMENT FOR FURTHER DETAILS.
 FALL FROM HEIGHTS DURING INSTALLATION.

KERB DETAILS SHOWN INDICATIVE ONLY. DETAILED DESIGN BY OTHERS



WORMGEAR SCREW JACK & POLE OPERATION



IF IN DOUBT ASK DO NOT SCALE	IT IS THE RESPONSIBILITY OF THE KERB DESIGNER TO ENSURE THE KERB WILL BE STRUCTURALLY ADEQUATE TO HOLD THE ROOFLIGHT. KERBS SHOWN ON THESE DRAWINGS ARE FOR ILLUSTRATION PURPOSES ONLY.	The manufacturer would advise an installation with a minimum pitch of 5° for rooflight units to minimize water pooling. Whilst the product can be installed flat without detriment to the warranty, the manufacturer cannot be held responsible for any excessive pooling of water to the surface of the rooflight, post installation, if installed without an adequate fall, larger units may require a greater fall. The final decision on amount of fall required must be made by the client and relayed to the installer.	THIS DRAWING MUST NOT BE COPIED OR PASSED TO A THIRD PARTY WITHOUT WRITTEN CONSENT FROM THE MANUFACTURER.	CHECKED D.PUGH	TOLERANCE UNLESS OTHERWISE STATED ±5	MATERIAL ALUMINIUM + GLASS	Roofglaze Rooflights Ltd. 11 Howard Road, Eaton Socon, St Neots, Cambs, PE19 8ET Telephone 01480 474797	DRAWING N° RGR-HV-306	REV	ROOFGLAZE
				DATE 28-06-2021	DIMENSIONS IN MM	FINISH STANDARD POLYESTER POWDER COAT OPTIONS: RAL 7016 ANTHRACITE GREY, RAL 9005 BLACK, RAL 9010 WHITE, 30% GLOSS		REV	SIZE A1	
SKYWAY™				DRAWN K. K.	SCALE 1:2, 1:6 @ A1		TITLE: SKYWAY MANUAL HINGED FLATGLASS			Lighting by nature™
				DATE 21-06-2021			SIGNED	CHECKED	DATE	