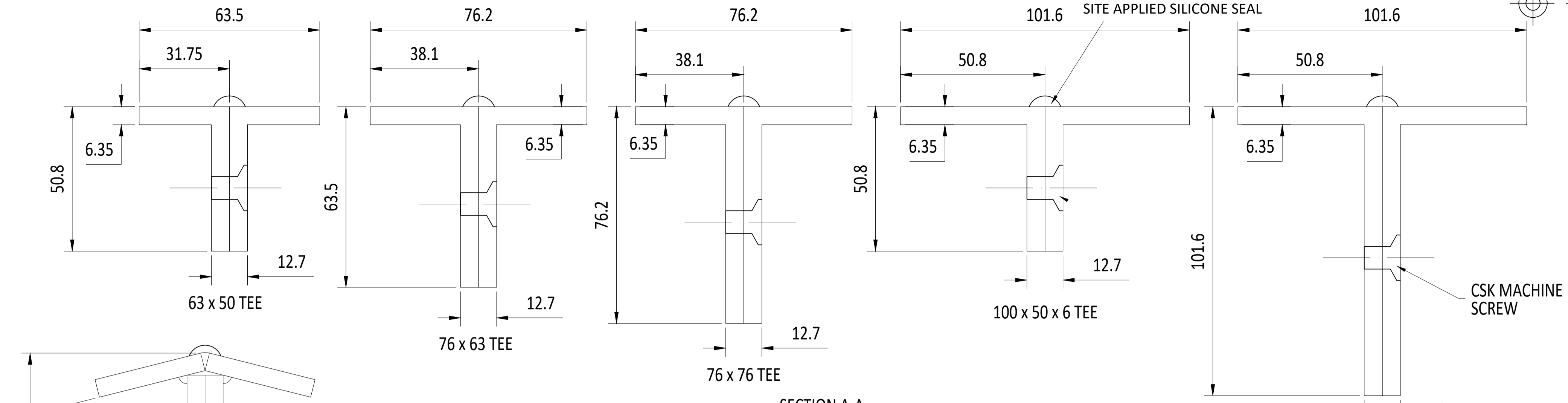
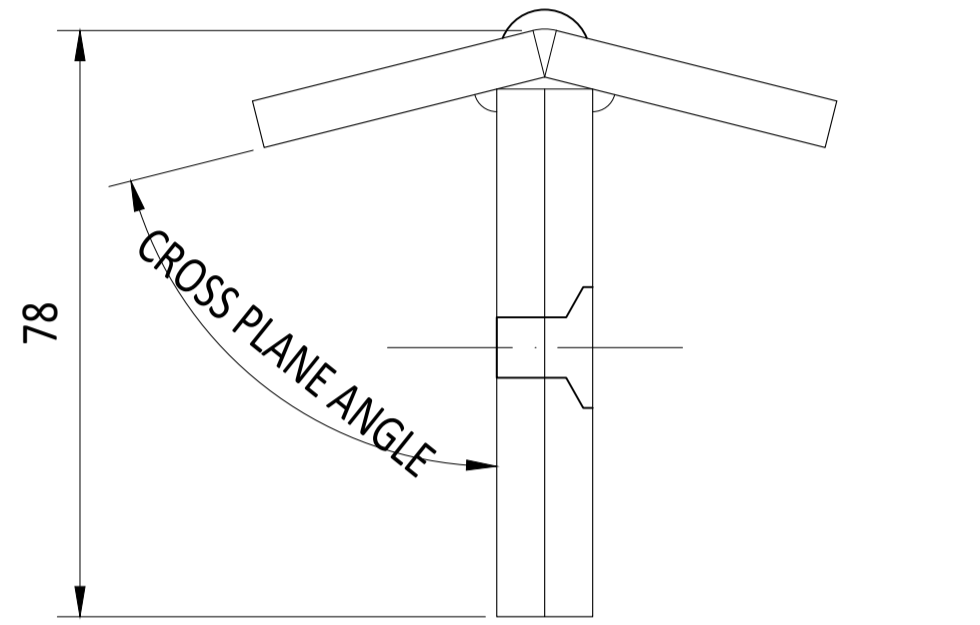


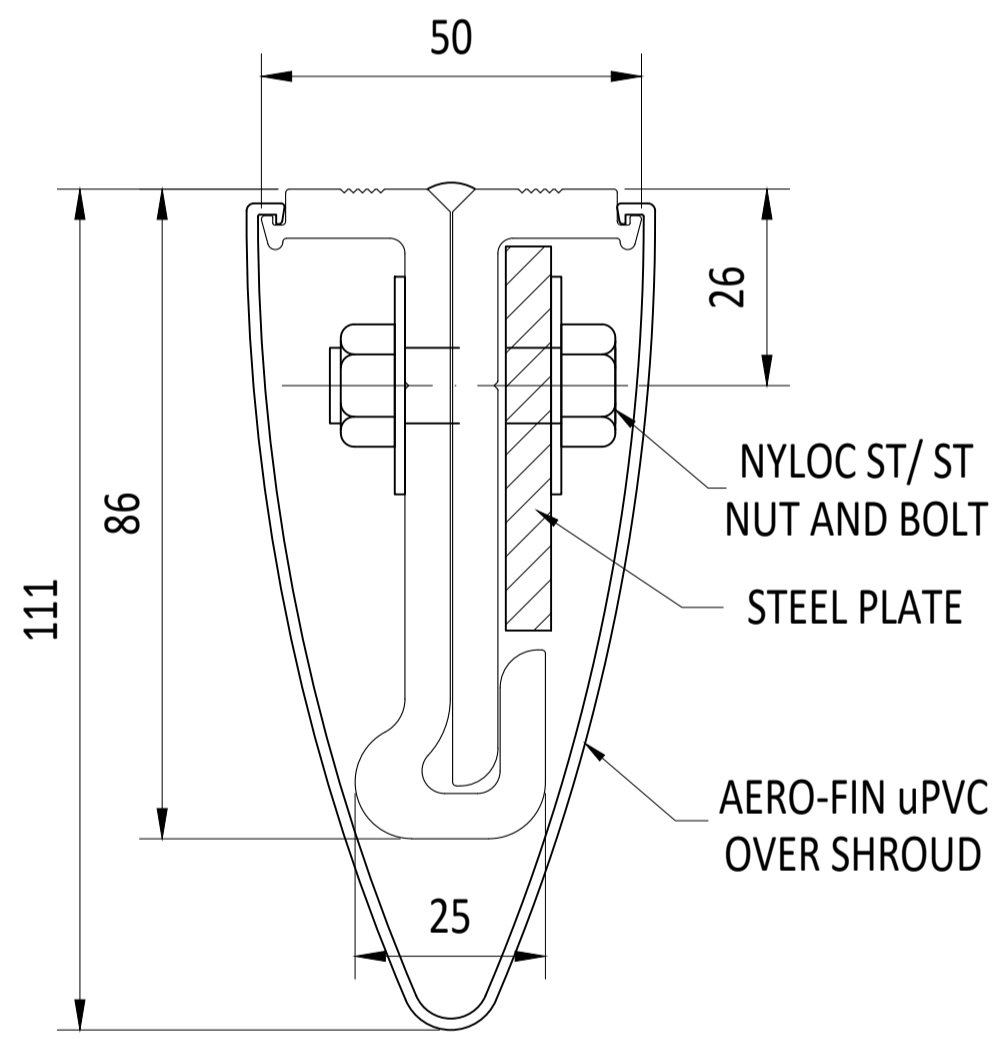
SECTION A-A
INTERLOCKING ANGLES CONNECTED BY STAINLESS
STEEL CSK M8 MACHINE SCREWS.



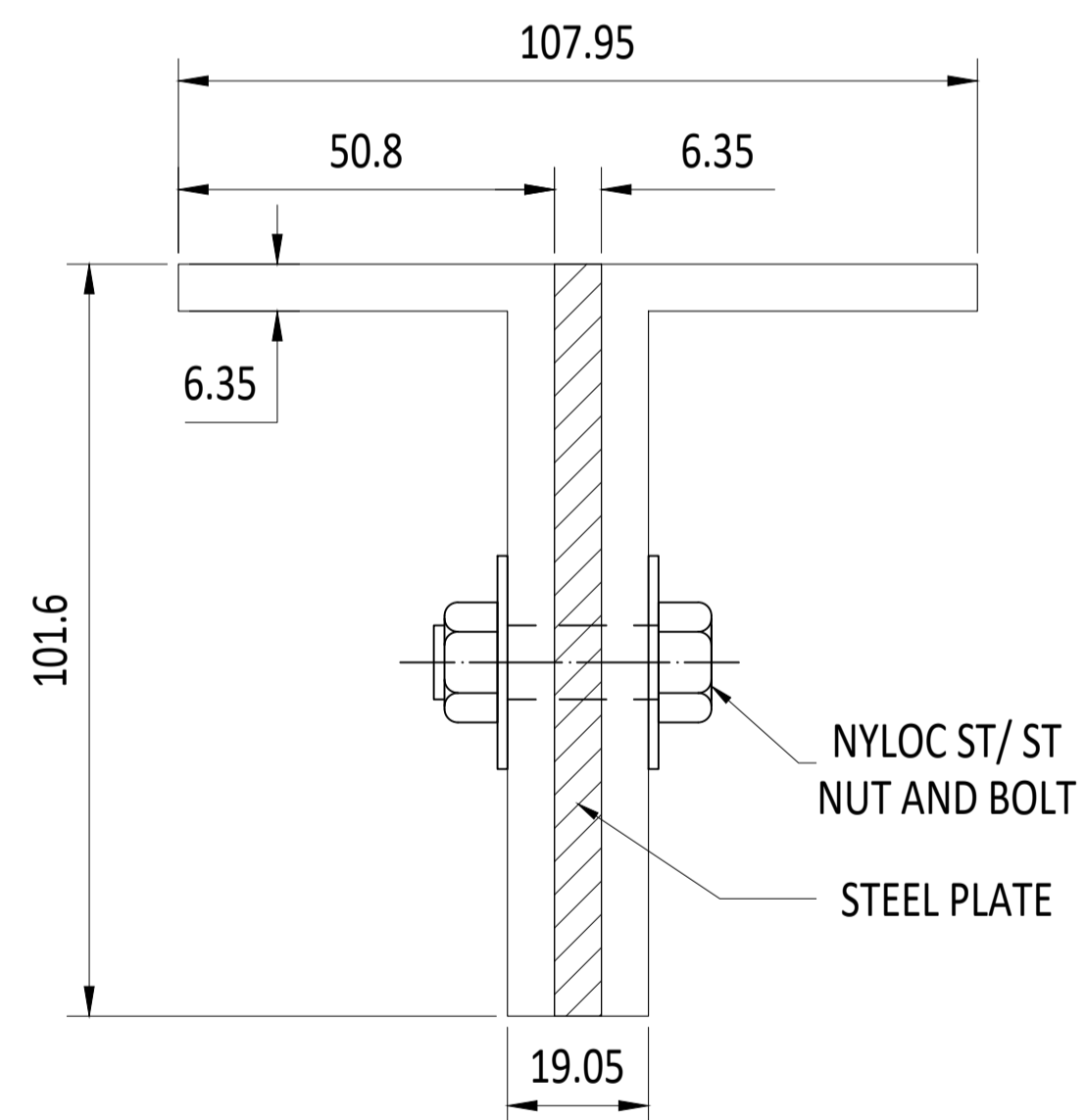
SECTION A-A
'L' BACK-TO-BACK ANGLES CONNECTED BY STAINLESS
STEEL CSK M8 MACHINE SCREWS.



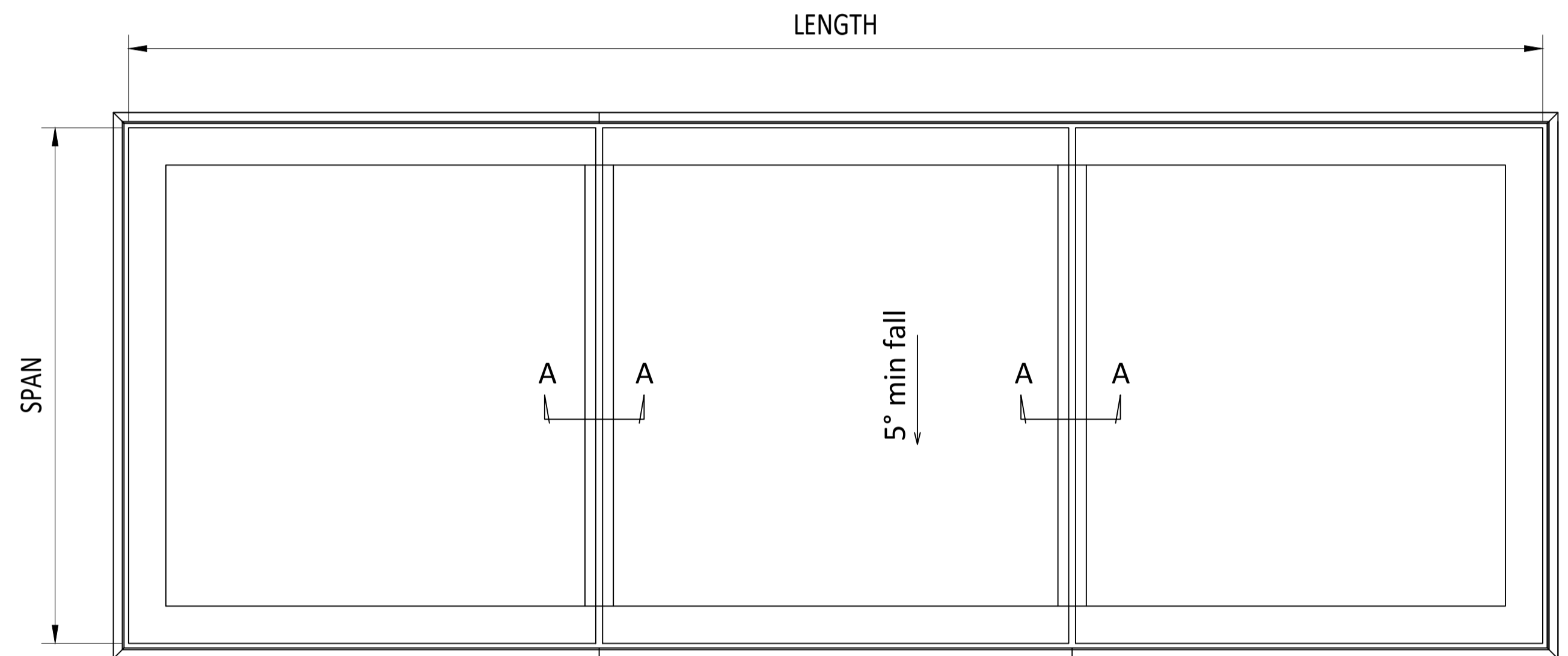
SECTION B-B
HIP BAR 'L' BACK-TO-BACK ANGLES CONNECTED BY
STAINLESS STEEL CSK M8 MACHINE SCREWS.



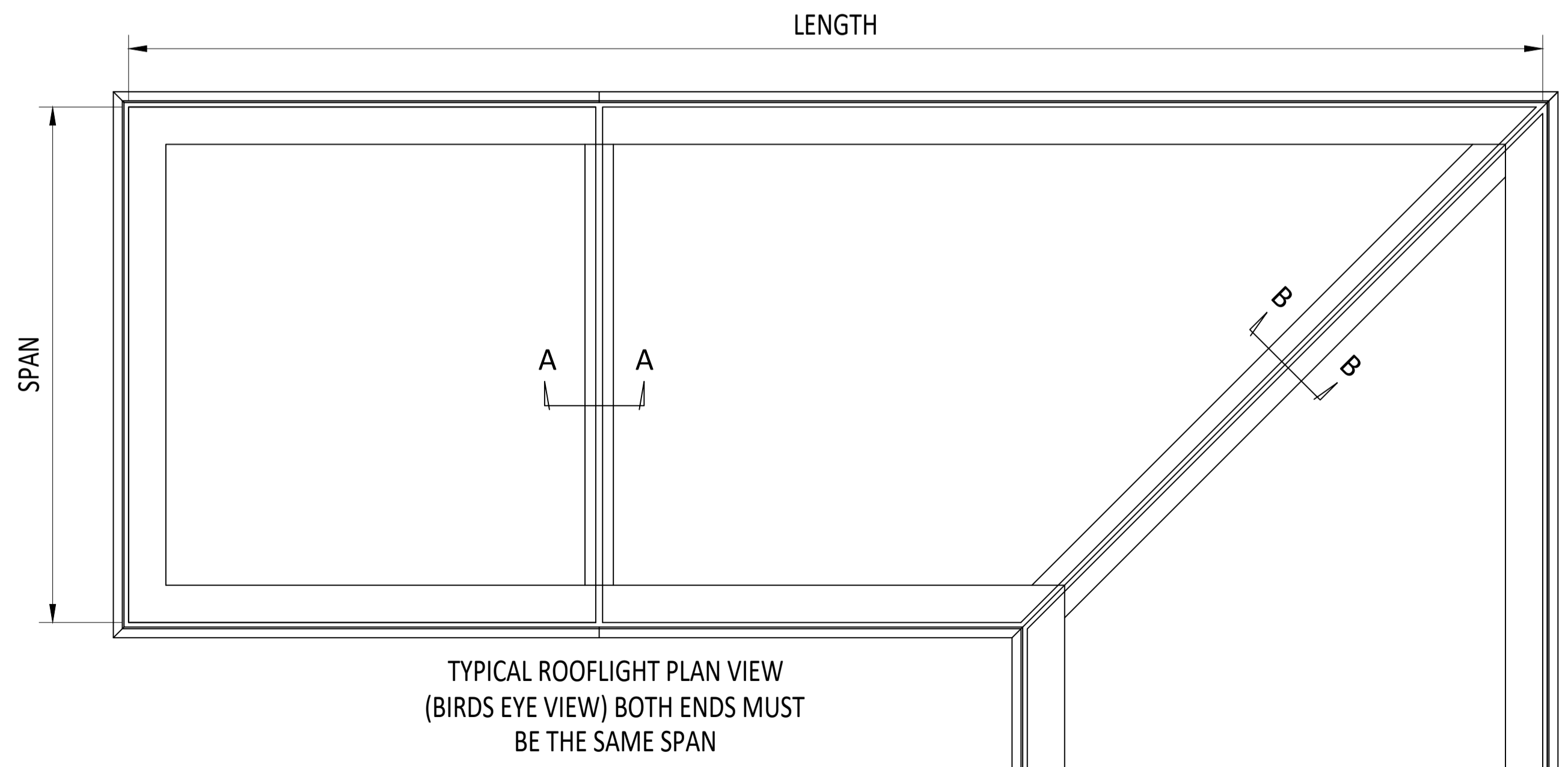
SECTION A-A
INTERLOCKING ANGLES CONNECTED BY STAINLESS
STEEL NUT & BOLTS.



SECTION A-A
'L' BACK-TO-BACK ANGLES CONNECTED BY STAINLESS
STEEL NUT & BOLTS WITH STAINLESS STEEL
REINFORCEMENT.



TYPICAL ROOFLIGHT PLAN VIEW
(TRUE VIEW ON SLOPE)



TYPICAL ROOFLIGHT PLAN VIEW
(BIRDS EYE VIEW) BOTH ENDS MUST
BE THE SAME SPAN

USE OF ANGLES IS DEPENDANT ON SIZE OF ROOFLIGHT,
GLASS SPEC, ROOFLIGHT LOCATION AND DESIGN LOADS.

IF IN DOUBT ASK DO NOT SCALE	IT IS THE RESPONSIBILITY OF THE KERB DESIGNER TO ENSURE THE KERB WILL BE STRUCTURALLY ADEQUATE TO HOLD THE ROOFLIGHT. KERBS SHOWN ON THESE DRAWINGS ARE FOR ILLUSTRATION PURPOSES ONLY.	The manufacturer would advise an installation with a minimum pitch of 5° for rooflight units to minimize water pooling. Whilst the product can be installed flat without detriment to the warranty, the manufacturer cannot be held responsible for any excessive pooling of water to the surface of the rooflight, post installation, if installed without an adequate fall. Larger units may require a greater fall. The final decision on amount of fall required must be made by the client and relayed to the installer.	THIS DRAWING MUST NOT BE COPIED OR PASSED TO A THIRD PARTY WITHOUT WRITTEN CONSENT FROM THE MANUFACTURER.	CHECKED	A. PHILLIPS	TOLERANCE UNLESS OTHERWISE STATED	±5	MATERIAL	ALUMINIUM + GLASS	DRAWING N°	RGR-S-20Z	REV	ROOFGLAZE	
				DATE	15-12-2020									DIMENSIONS IN
SKYWAY™				DRAWN	D. PUGH	SCALE	1:2 & 1:10 @ A1			TITLE: SKYWAY MULTI-PANE FLATGLASS GLAZING BAR OPTIONS				
				DATE	15-12-2020	REV	AMENDMENTS			SIGNED	CHECKED	DATE		