

NOTES

X No. REQUIRED

GLASS SPEC:

OUTER : 6mm CLEAR HST TOUGHENED GLASS  
 CAVITY : 16mm ARGON FILLED + WARM EDGE SPACER  
 INNER : 6mm CLEAR HST TOUGHENED OR 8.8mm LAMINATED GLASS + LOW E COATING  
 SILICONE BONDED

- LIGHT TRANSMISSION = 78 %
- CENTRE PANE U VALUE = 1.1 W/M<sup>2</sup>.K
- SOLAR G VALUE = 0.63
- ACOUSTIC REDUCTION = 34 (6/6) 39 (6/8.8) RW DB
- AIR PERMEABILITY = CWCT CLASS A4
- WEATHER RESISTANCE = CWCT CLASS A7
- WIND RESISTANCE = CWCT CLASS E2400
- AA FIRE-RATED: AA DESIGNATION (NATIONAL CLASS) OR BROOF (T4) EUROPEAN CLASS AND EURO CLASS A1 NON-COMBUSTIBLE
- WEIGHT = 45 KG/M<sup>2</sup> PER PANEL/ SECTION

INTERNAL OPENING SIZE IS NOT RELEVANT EXCEPT TO COMPLETE GLAZING BAR DESIGN.

GLASS BONDED TO FRAME WITH GLAZING SECURITY TAPE.

KERB DETAILS SHOWN INDICATIVE DETAILED DESIGN BY OTHERS.

MIN. 5° FALL RECOMMENDED TO HELP SHED WATER. LARGER UNITS MAY REQUIRE STEEPER PITCHES.

PRODUCT U-VALUE = AS LOW AS 1.2 W/m<sup>2</sup>.K

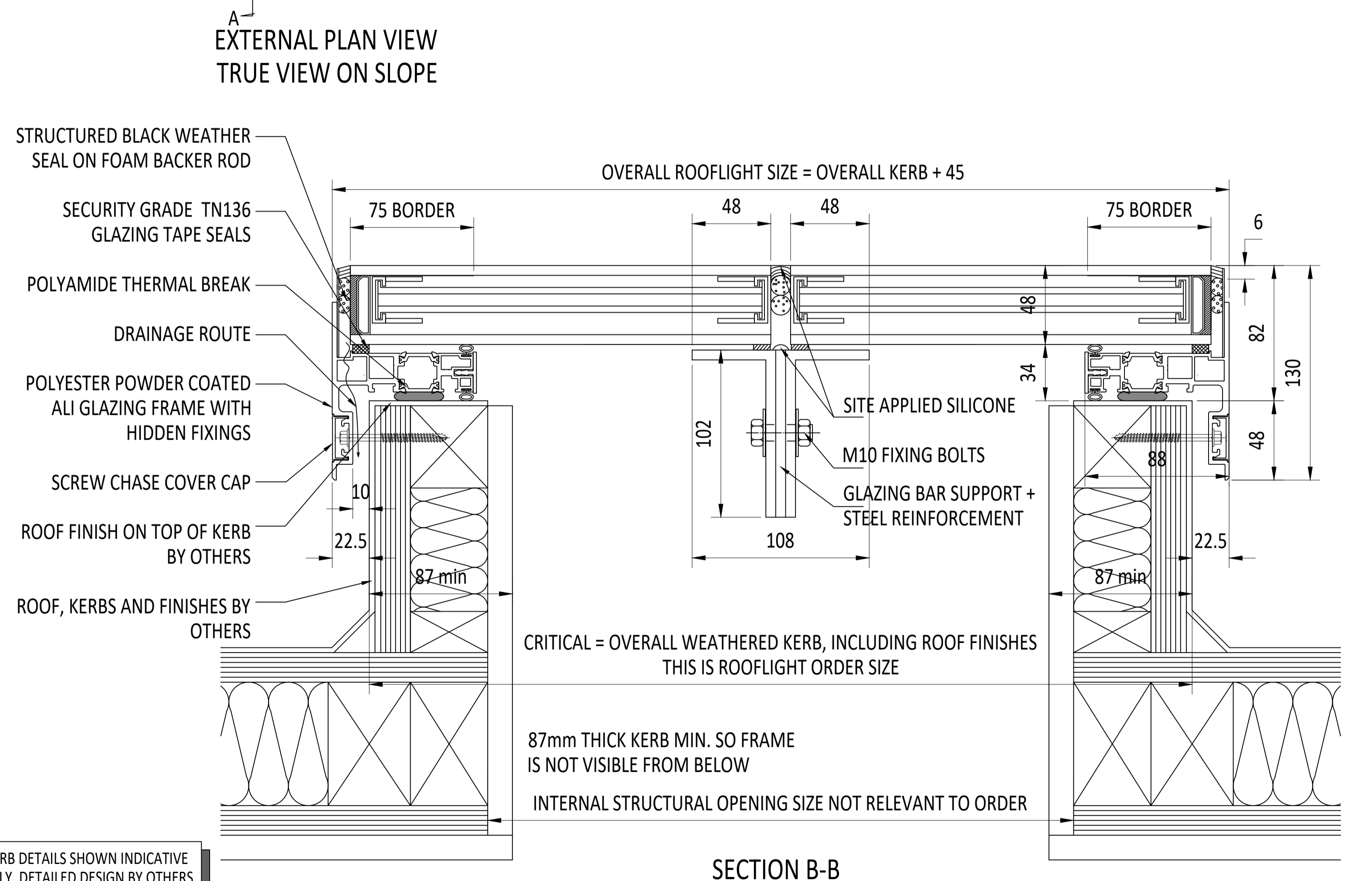
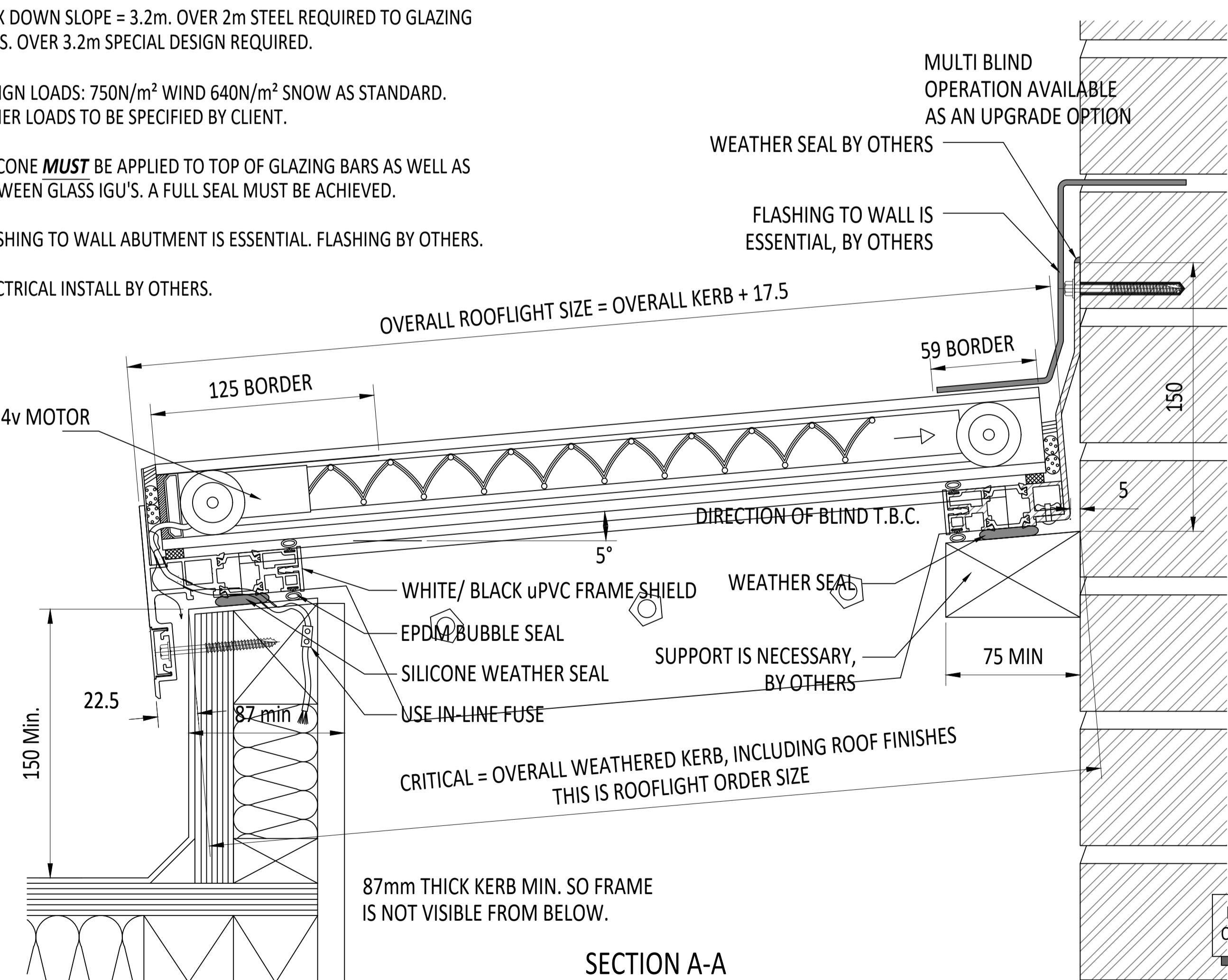
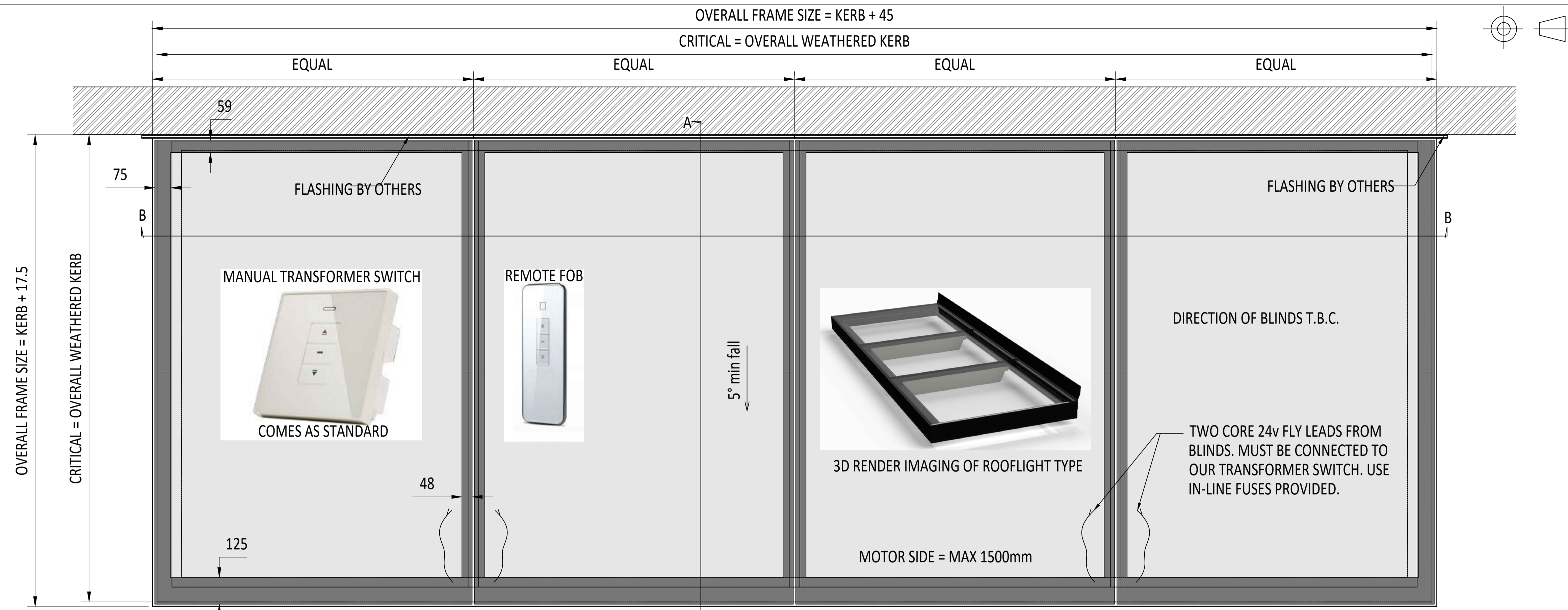
MAX DOWN SLOPE = 3.2m. OVER 2m STEEL REQUIRED TO GLAZING BARS. OVER 3.2m SPECIAL DESIGN REQUIRED.

DESIGN LOADS: 750N/m<sup>2</sup> WIND 640N/m<sup>2</sup> SNOW AS STANDARD. OTHER LOADS TO BE SPECIFIED BY CLIENT.

SILICONE **MUST** BE APPLIED TO TOP OF GLAZING BARS AS WELL AS BETWEEN GLASS IGU'S. A FULL SEAL MUST BE ACHIEVED.

FLASHING TO WALL ABUTMENT IS ESSENTIAL. FLASHING BY OTHERS.

ELECTRICAL INSTALL BY OTHERS.



IF IN DOUBT ASK DO NOT SCALE



IT IS THE RESPONSIBILITY OF THE KERB DESIGNER TO ENSURE THE KERB WILL BE STRUCTURALLY ADEQUATE TO HOLD THE ROOFLIGHT. KERBS SHOWN ON THESE DRAWINGS ARE FOR ILLUSTRATION PURPOSES ONLY.

The manufacturer would advise an installation with a minimum pitch of 5° for rooflight units to minimize water pooling. Whilst the product can be installed flat without detriment to the warranty, the manufacturer cannot be held responsible for any excessive pooling of water to the surface of the rooflight, post installation, if installed without an adequate fall, larger units may require a greater fall. The final decision on amount of fall required must be made by the client and relayed to the installer.

CHECKED	A. PHILLIPS	TOLERANCE UNLESS OTHERWISE STATED	±5
DATE	30-07-2020	DIMENSIONS IN	MM
DRAWN	D. PUGH	SCALE	1:2, 1:6 @ A1
DATE	30-07-2020		

MATERIAL ALUMINIUM + GLASS  
 FINISH STANDARD POLYESTER POWDER COAT OPTIONS: RAL 7016 ANTHRACITE GREY, RAL 9005 BLACK, RAL 9010 WHITE, 30% GLOSS (MATT)

REV	AMENDMENTS	SIGNED	CHECKED	DATE

Roofglaze Rooflights Ltd.  
 11 Howard Road, Eaton Socon,  
 St Neots, Cambs, PE19 8ET  
 Telephone 01480 474797

DRAWING N°. RGR-MP-20-213

TITLE: SKYWAY FIXED MULTI PANE FLATGLASS + WALL ABUTMENT + BLIND

REV ROOFGLAZE  
 SIZE A1  
 Lighting by nature™