

Flatglass Protect+

Flatglass Protect+ Rooflights

A secure, effective daylighting solution for residential, commercial and public buildings

Key Features & Benefits

- 15 year warranty*
- Secured by Design and Part Q compliant rooflight solution, using a laminated inner glass pane, upgraded fixings and glazing tapes to maximise security
- Fully thermally-broken aluminium frame prevents any cold bridging, which effectively limits the risk of condensation
- Excellent thermal performance, with total system U-values as low as 0.6 W/m²K achievable
- Quick and easy to install on-site
- Designed to be installed on roof pitches from 3 degrees
- Recommended minimum pitch of 5 degrees to help shed water
- Minimal framework: daylight is maximised while the visible framework is minimised

Frame Specification

- The Fixed Flatglass rooflight frame is manufactured from extruded aluminium section to BS 1474, EN 12020-1:2001
- Polyamide thermal break within the glazing frame makes it fully thermally-broken and extremely thermally-efficient
- Polyester Powder Coated Aluminium to BS EN 12206-1:2004
- RAL Colours: Anthracite Grey (RAL 7016) frames on stock rooflights
- White (RAL 9010) and Black (RAL 9005) frames are also available as standard options
- Bespoke RAL colour options available

Critical Kerb External Dimensions (Standard Glass Specification)

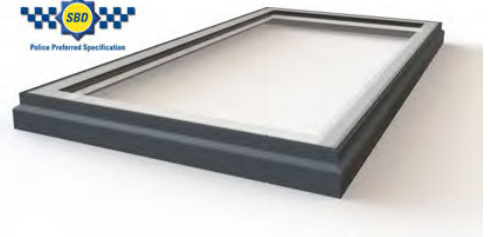
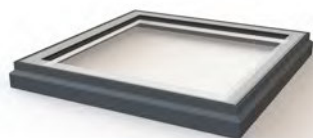
Min. Kerb Height: 150mm (at the eaves end)
 Min. Kerb Thickness: 75mm (excluding finishes)
 Max. Kerb Thickness: 130mm (excluding finishes)
 Max. Size: 1200mm x 3000mm
 Min. Size: 400mm x 400mm
 Min. Pitch: 3°

British Standards Compliance

BS 6375-1: Weathertightness
 BS EN 1026: Air Permeability
 BS EN 1027: Watertightness
 BS EN 12211: Wind Resistance
 BS EN 12206-1:2004: Polyester Powder Coating
 STS 202 BR2: Burglar Resistance

Design Loadings

Snow: 640 N/m²
 Wind: 750 N/m²



Product Testing & Certification

- Weathertightness: CWCT Class A4 Air leakage, Resistance to Wind Class E2400 Pa and Watertightness Class R7
- Non-fragility: CWCT TN66/67 and TN92, with Class 1 and Class 2 compliant solutions available
- Secured by Design and Part Q Compliant: Certisecure accredited, tested by Exova to determine whether it can withstand an intruder attempting to gain entry to a property via the rooflight, achieving burglar resistance class BR2 to the STS 202 standard
- AA Fire-rated: AA Designation (National Class) or BROF (T4) European Class and Euro Class A1 non-combustible

Glass Specification

Double Glazed - Protect+:

Outer: 8mm Heat Soak Tested Toughened glass with Soft Low-E coating to cavity face, sandblast border
 Cavity: 16mm Argon filled with Swisspacer warm edge spacer silicone bonded
 Inner: 8.8mm Laminated glass with PVB interlayer and polished edges, UV resistant silicone bonded
Glass must be laminated as a minimum requirement for Part Q compliance, bespoke glass specs are available

Rooflight Performance

Building Regulations (E&W)
 Approved Document L compliant design to achieve low U-values
 U-values: As low as 0.6 W/m²K
 G-values: As low as 0.19
 Light Transmission: Up to 78.5%

Bespoke Glass Options

- Solar Control
- Privacy Glass
- Body Tinted
- Acoustic Laminate
- Coloured Glass
- Easy-clean Coatings (Ritec)
- CUIIN Advanced Thermal Performance



Get in touch for Technical and Estimating Advice

T: 01480 474 797 | W: www.roofglaze.co.uk | E: rgrestimating@roofglaze.co.uk

Roofglaze Ltd

11 Howard Road, Eaton Socon, St Neots, Cambridgeshire PE19 8ET