

Flatglass

Multi-section Flatglass Rooflights

A smart and effective daylighting and / or ventilation solution for residential, commercial and public buildings

Key Features & Benefits

- 15 year warranty*
- Fully thermally-broken aluminium frame prevents cold bridging, reducing the risk of condensation
- Excellent thermal performance, with total system U-values as low as 0.6 W/m²K achievable
- Quick and easy to install on-site
- Compatible with both flat and pitched roofs, Flatglass rooflights are installed to a builder's kerb and finished by roofing membrane
- Designed to be installed on roof pitches from 3 degrees
- Recommended minimum pitch of 5 degrees to help shed water
- Minimal framework: daylight is maximised while the visible framework is minimised

Frame Specification

- The Multi-section Flatglass rooflight frame is manufactured from extruded aluminium section to BS 1474, EN 12020-1:2001
- Polyamide thermal break within the glazing frame makes it fully thermally-broken and extremely thermally-efficient
- Polyester Powder Coated Aluminium to BS EN 12206-1:2004
- RAL Colours: Anthracite Grey (RAL 7016) frames on standard Multi-section Flatglass rooflights
- White (RAL 9010) and Black (RAL 9005) frames are also available as standard options
- Bespoke RAL colour options available

Glass Specification

Double Glazed - Standard:

Outer: 6mm Clear Heat Soak Tested Toughened glass
 Cavity: 20mm Argon filled with Swisspacer warm edge spacer silicone bonded
 Inner: 6mm Clear Heat Soak Tested Toughened glass with Soft Low-E coating to cavity face

Double Glazed - Laminated Inner:

Outer: 8mm Clear Heat Soak Tested Toughened glass with Soft Low-E coating to cavity face
 Cavity: 18mm Argon filled with Swisspacer warm edge spacer silicone bonded
 Inner: 8.8mm Laminated glass with PVB interlayer and polished edges

Double Glazed (CWCT Class 1 Non-fragile):

Outer: 12mm Clear Heat Soak Tested Toughened glass
 Cavity: 16mm Argon filled with Swisspacer warm edge spacer silicone bonded
 Inner: 13.5mm Laminated glass with SGP interlayer and Soft Low-E coating to cavity face with polished edges



Double Glazed (CWCT Class 2 Non-fragile):

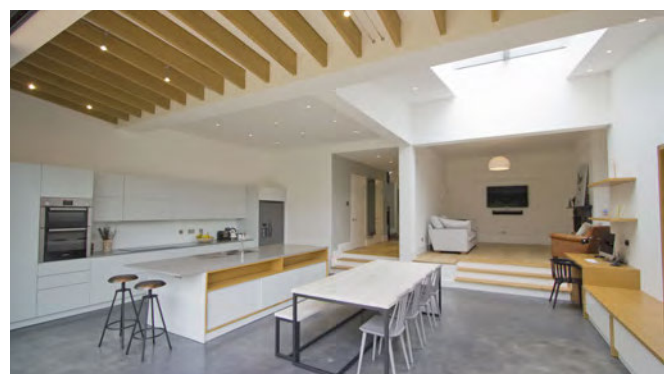
Outer: 6mm Clear Heat Soak Tested Toughened glass with Soft Low-E coating to cavity face
 Cavity: 16mm Argon filled with Swisspacer warm edge spacer silicone bonded
 Inner: 9.5mm Laminated glass with PVB interlayer and polished edges

Product Testing & Certification

- Weathertightness: CWCT Class A4 Air leakage, Resistance to Wind Class E2400 Pa and Watertightness Class R7
- Non-fragility: CWCT TN66/67 and TN92, with Class 1 and Class 2 compliant solutions available
- AA Fire-rated: AA Designation (National Class) or BROF (T4) European Class and Euro Class A1 non-combustible

Critical Kerb External Dimensions (Standard Glass Specification)

Min. Kerb Height: 150mm (at the eaves end)
 Min. Kerb Thickness: 75mm (excluding finishes)
 Max. Width: 3200mm (dependent on glass specification)
 Min. Width: 400mm
 Max. Slope Length: Unlimited (bay widths are dependent on the overall slope length)
 Min. Pitch: 3°



Product Variations

- Multi-pane with silicone jointed glazing for a flush finish
- Triple Glazed rooflights
- Walk-on rooflights
- Interlocking glazing bars
- Aluminium back-to-back angles (any Standard RAL colour)
- White (RAL 9010) uPVC Aero-fin shroud (other RAL colours available)
- Circular, bespoke shaped and tapered rooflight options
- Wall, Head and Verge Abutment details
- Head and Verge Abutments available on up to three sides
- Bespoke solutions for natural ventilation are available

Rooflight Performance

Building Regulations (E&W) Approved Document L compliant design to achieve low U-values

U-values: As low as 0.6 W/m²K

G-values: As low as 0.19

Light Transmission: Up to 78.5%

British Standards Compliance

BS 6375-1: Weathertightness

BS EN 1026: Air Permeability

BS EN 1027: Watertightness

BS EN 12211: Wind Resistance

BS EN 12206-1:2004: Polyester Powder Coating

Rooflight Cleaning & Maintenance

All of our Flatglass rooflights can be supplied with an easyclean coating, the **Ritec ClearShield** system provides an efficient solution to greatly reduce the need for cleaning

'Non-stick', easy-clean rooflight protection provides:

- Reduced cleaning time, effort and frequency
- Keeps rooflights looking like new, staying cleaner for significantly longer
- Resists glass staining and contamination from tree sap, bird droppings, traffic pollution and general dirt
- Helps to maintain your Window Energy Rating
- More daylight leads to enhanced well-being

Bespoke Glass Options

- Solar Control
- Privacy Glass
- Body Tinted
- Acoustic Laminate
- Coloured Glass
- Easy-clean Coatings (Ritec)
- CUIIN Advanced Thermal Performance



Design Loadings

Snow: 640 N/m²

Wind: 750 N/m²



Get in touch for Technical and Estimating Advice

T: 01480 474 797 | W: www.roofglaze.co.uk | E: rgrestimating@roofglaze.co.uk

Roofglaze Ltd

11 Howard Road, Eaton Socon, St Neots, Cambridgeshire PE19 8ET