

# Multi-section Flatglass Rooflights

*A smart and effective daylighting and / or ventilation solution for residential, commercial and public buildings*



## Key Features & Benefits

- 15 year warranty\*
- Fully thermally-broken aluminium frame prevents cold bridging, reducing the risk of condensation
- Excellent thermal performance, with total system U-values as low as 0.6 W/m<sup>2</sup>K achievable
- Quick and easy to install on-site
- Compatible with both flat and pitched roofs, Flatglass rooflights are installed to a builder's kerb and finished by roofing membrane
- Designed to be installed on roof pitches from 3 degrees
- Recommended minimum pitch of 5 degrees to help shed water
- Minimal framework: daylight is maximised while the visible framework is minimised

## Frame Specification

- The Multi-section Flatglass rooflight frame is manufactured from extruded aluminium section to BS 1474, EN 12020-1:2001
- Polyamide thermal break within the glazing frame makes it fully thermally-broken and extremely thermally-efficient
- Polyester Powder Coated Aluminium to BS EN 12206-1:2004
- **RAL Colours:** Anthracite Grey (RAL 7016) frames on standard Multi-section Flatglass rooflights
- White (RAL 9010) and Black (RAL 9005) frames are also available as standard options
- Bespoke RAL colour options available

## Glass Specification

### Double Glazed - Standard:

**Outer:** 6mm Clear Heat Soak Tested Toughened glass

**Cavity:** 20mm Argon filled with Swisspacer warm edge spacer silicone bonded

**Inner:** 6mm Clear Heat Soak Tested Toughened glass with Soft Low-E coating to cavity face

### Double Glazed - Laminated Inner:

**Outer:** 8mm Clear Heat Soak Tested Toughened glass with Soft Low-E coating to cavity face

**Cavity:** 18mm Argon filled with Swisspacer warm edge spacer silicone bonded

**Inner:** 8.8mm Laminated glass with PVB interlayer and polished edges

### Double Glazed (CWCT Class 1 Non-fragile):

**Outer:** 12mm Clear Heat Soak Tested Toughened glass

**Cavity:** 16mm Argon filled with Swisspacer warm edge spacer silicone bonded

**Inner:** 13.5mm Laminated glass with SGP interlayer and Soft Low-E coating to cavity face with polished edges

### Double Glazed (CWCT Class 2 Non-fragile):

**Outer:** 6mm Clear Heat Soak Tested Toughened glass with Soft Low-E coating to cavity face

**Cavity:** 16mm Argon filled with Swisspacer warm edge spacer silicone bonded

**Inner:** 9.5mm Laminated glass with PVB interlayer and polished edges

## Product Testing & Certification

- **Weathertightness:** CWCT Class A4 Air leakage, Resistance to Wind Class E2400 Pa and Watertightness Class R7
- **Non-fragility:** CWCT TN66/67 and TN92, with Class 1 and Class 2 compliant solutions available
- **AA Fire-rated:** AA Designation (National Class) or BROF (T4) European Class and Euro Class A1 non-combustible

## Critical Kerb External Dimensions (Standard Glass Specification)

**Min. Kerb Height:** 150mm (at the eaves end)

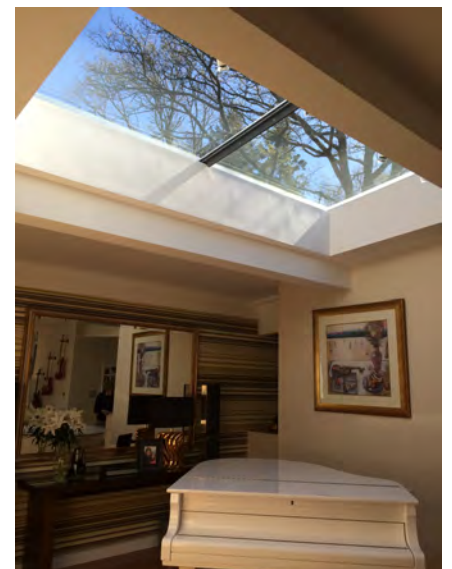
**Min. Kerb Thickness:** 75mm (excluding finishes)

**Max. Width:** 3200mm (dependent on glass specification)

**Min. Width:** 400mm

**Max. Slope Length:** Unlimited (bay widths are dependent on the overall slope length)

**Min. Pitch:** 3°





A smart and effective daylighting and / or ventilation solution for residential, commercial and public buildings

**Product Variations**

- Multi-pane with silicone jointed glazing for a flush finish
- Triple Glazed rooflights
- Walk-on rooflights
- Interlocking glazing bars
- Aluminium back-to-back angles (any Standard RAL colour)
- White (RAL 9010) uPVC Aero-fin shroud (other RAL colours available)
- Circular, bespoke shaped and tapered rooflight options
- Wall, Head and Verge Abutment details
- Head and Verge Abutments available on up to three sides
- Bespoke solutions for natural ventilation are available

**Rooflight Performance**

Building Regulations (E&W)  
Approved Document L compliant design to achieve low U-values

**U-values:** As low as 0.6 W/m<sup>2</sup>K

**G-values:** As low as 0.19

**Light Transmission:** Up to 78.5%

**British Standards Compliance**

**BS 6375-1:** Weathertightness

**BS EN 1026:** Air Permeability

**BS EN 1027:** Watertightness

**BS EN 12211:** Wind Resistance

**BS EN 12206-1:2004:** Polyester Powder Coating

**Rooflight Cleaning & Maintenance**

All of our Flatglass rooflights can be supplied with an easy-clean coating, the **Ritec ClearShield** system provides an efficient solution to greatly reduce the need for cleaning

**‘Non-stick’, easy-clean rooflight protection provides:**

- Reduced cleaning time, effort and frequency
- Keeps rooflights looking like new, staying cleaner for significantly longer
- Resists glass staining and contamination from tree sap, bird droppings, traffic pollution and general dirt
- Helps to maintain your Window Energy Rating
- More daylight leads to enhanced well-being

**Bespoke Glass Options**

- Solar Control
- Privacy Glass
- Body Tinted
- Acoustic Laminate
- Coloured Glass
- Easy-clean Coatings (Ritec)
- CUIIN Advanced Thermal Performance

**Design Loadings**

**Snow:** 640 N/m<sup>2</sup>

**Wind:** 750 N/m<sup>2</sup>



**Get in touch for Technical and Estimating Advice:**

T: 01480 474 797 | W: www.roofglaze.co.uk

E: rgrestimating@roofglaze.co.uk

**Roofglaze Ltd**

11 Howard Road  
Eaton Socon  
St Neots  
Cambridgeshire  
PE19 8ET

