

**NOTES**

X No. REQUIRED

**GLAZING SPECIFICATION:**

OUTER SKIN: 33mm CLEAR TOUGHENED LAMINATED GLASS WITH BLACK PAINTED BORDER TO FACE 2  
CAVITY: 12mm ARGON FILLED + WARM EDGE SPACER  
INNER SKIN: 6mm CLEAR HST TOUGHENED GLASS WITH LOW-E COATING TO CAVITY FACE

SILICONE BONDED

ROOFLIGHT WEIGHT = 116 kg/m<sup>2</sup>

DOMESTIC LOADINGS TO BS EN 1991-1-1:

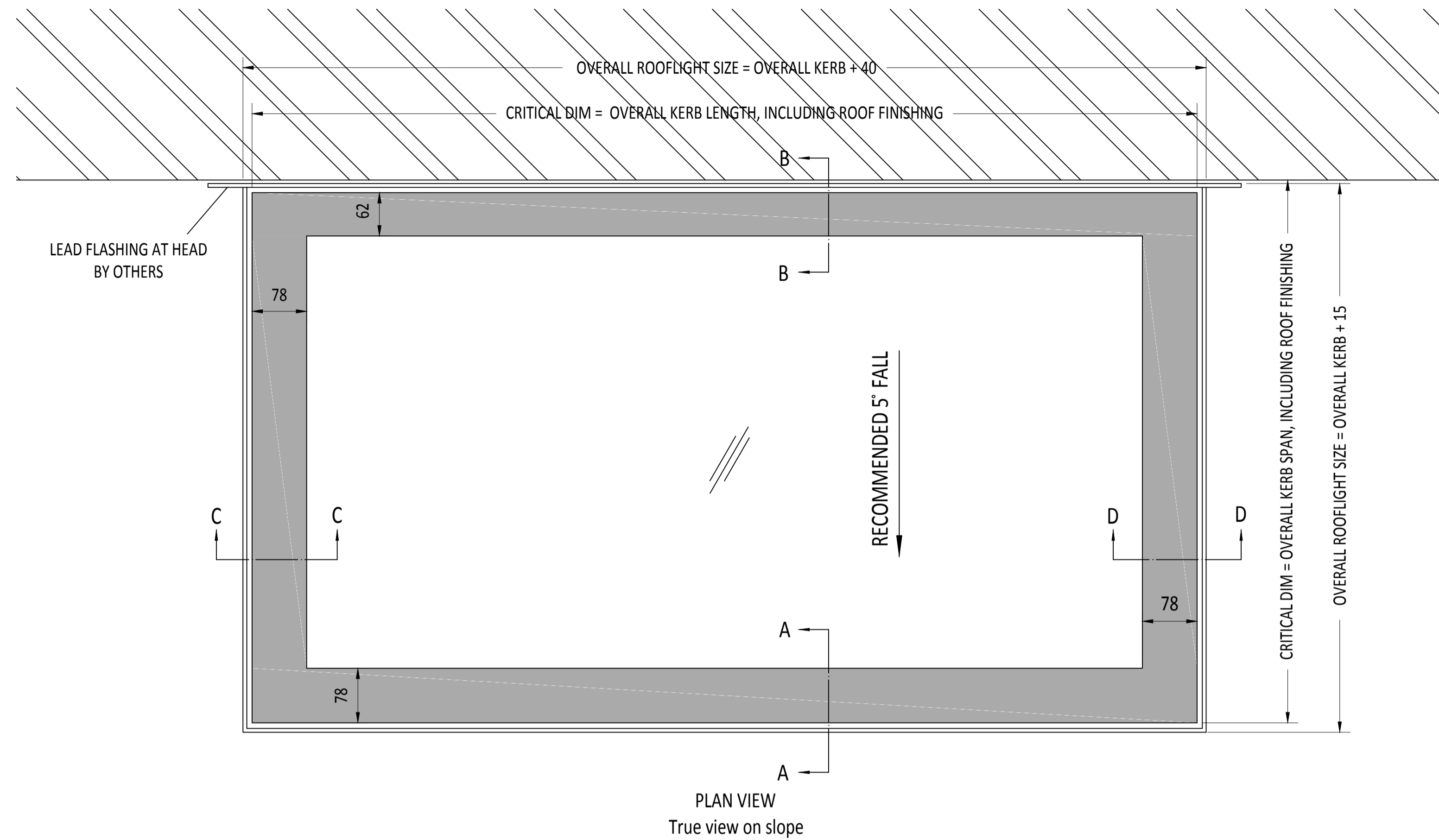
- 1.5 kN/m<sup>2</sup> Uniformly distributed load (25.5 or 33 glass)
- 2.0 kN Concentrated load
- 4.0 kN/m<sup>2</sup> Uniformly distributed load (33 or 39 glass)
- 3.6 kN Concentrated load
- 5.0 kN/m<sup>2</sup> Uniformly distributed load (39 or 48)
- 4.5 kN Concentrated load

GLASS THICKNESS MAY VARY DEPENDING ON LOADS (25.5, 31.5, 33, 39, 48)

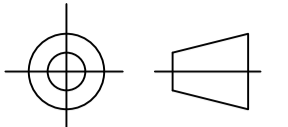
BORDER BORDER SHOWN AS STANDARD TO COVER GLAZING FRAME. OTHER DIMS AVAILABLE UPON REQUEST.

CENTRE PANE U VALUE = 1.0W/m<sup>2</sup>.K (Guardian Glass online glass configurator)

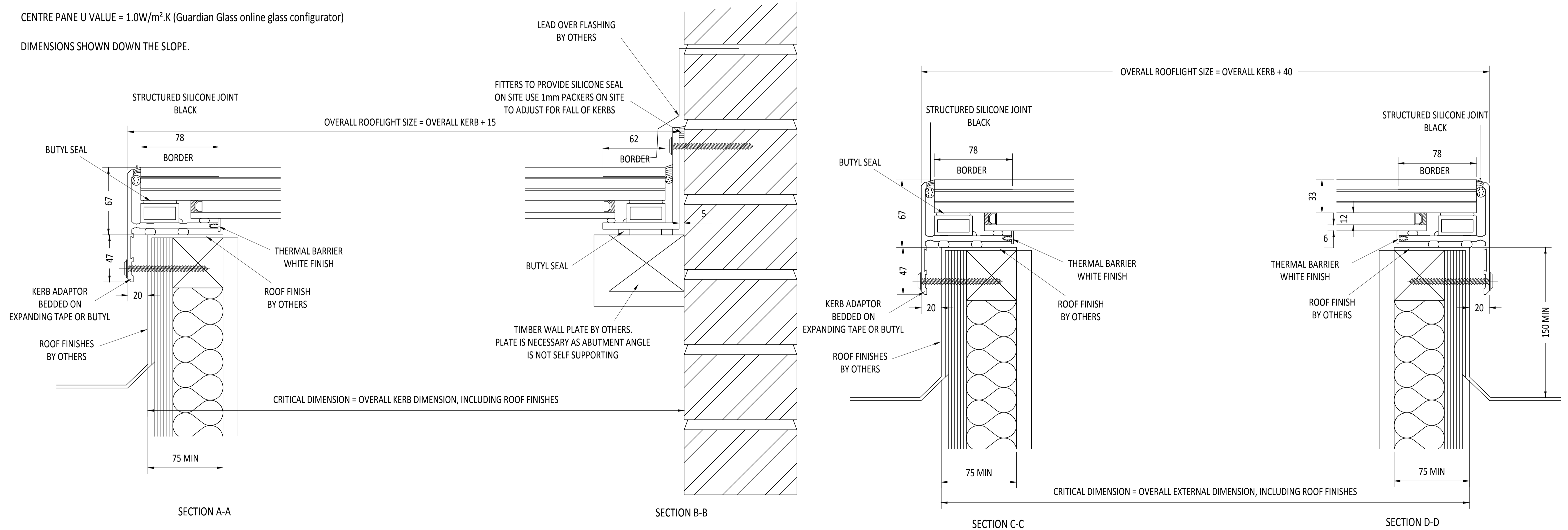
DIMENSIONS SHOWN DOWN THE SLOPE.



KERB DETAILS SHOWN INDICATIVE ONLY. DETAILED DESIGN BY OTHERS



**CDM - HAZARD IDENTIFICATION - HANDLING MATERIALS**  
BE AWARE OF SHARP EDGES AND CORNERS WHEN HANDLING MATERIALS. MOST EDGES AND CORNERS WILL BE DEBURRDED BUT THERE IS STILL A SMALL RISK. WEAR APPROPRIATE PPE REQUIRED FOR THE TASK. THE MHOR 1992 SET OUT A CLEAR RANKING OF MEASURES FOR DEALING WITH RISKS FROM MANUAL HANDLING. THESE ARE:  
• FIRST: AVOID HAZARDOUS MANUAL HANDLING OPERATIONS SO FAR AS IS REASONABLY PRACTICABLE;  
• SECOND: ASSESS ANY HAZARDOUS MANUAL HANDLING OPERATIONS THAT CANNOT BE AVOIDED; AND  
• THIRD: REDUCE THE RISK OF INJURY SO FAR AS IS REASONABLY PRACTICABLE.  
HAND PROTECTION (MANDATORY TO: BS EN 388:1994).  
ROOFLIGHTS MUST ONLY BE INSTALLED BY COMPETENT CONTRACTORS.  
REFER TO RISK ASSESSMENT FOR FURTHER DETAILS.



IF IN DOUBT ASK  
DO NOT SCALE

IT IS THE RESPONSIBILITY OF THE KERB DESIGNER TO ENSURE THE KERB WILL BE STRUCTURALLY ADEQUATE TO HOLD THE ROOFLIGHT. KERBS SHOWN ON ROOFLAZE DRAWINGS ARE FOR ILLUSTRATION PURPOSES ONLY.

Roofglaze would advise an installation with a minimum pitch of 5° for rooflight units to minimize water pooling. Whilst the product can be installed flat without detriment to the warrantee, Roofglaze cannot be held responsible for any excessive pooling of water to the surface of the rooflight post installation, if installed without an adequate fall.

THIS DRAWING MUST NOT BE COPIED OR PASSED TO A THIRD PARTY WITHOUT WRITTEN CONSENT FROM ROOFLAZE LIMITED.

CHECKED  
DATE  
DRAWN  
C. MITCHELL  
DATE  
20-01-2016

TOLERANCE UNLESS OTHERWISE STATED ±5  
DIMENSIONS IN MM  
SCALE 1:5 & 1:2 @ A1

MATERIAL ALUMINIUM + GLASS  
FINISH POLYESTER POWDER COATING COLOUR T.B.C.

REV	AMENDMENTS	SIGNED	CHECKED	DATE

Roofglaze Limited,  
11 Howard Road, Eaton Socon, St Neots, Cambs, PE19 8ET  
Telephone 01480 474797. Fax 01480 474774.  
E-mail technical@roofglaze.co.uk

TITLE: **FIXED WALK ON  
FIXED WALK ON FLATGLASS + HEAD ABUT**

**Roofglaze**

DRAWING N°: **RG-80-405**  
SHEET 1 OF 1

REV