

# STOCK ROOFLIGHTS

| SPAN EXTERNAL KERB | LENGTH EXTERNAL KERB | FRAME SIZE SPAN x LENGTH | U-VALUE W/m <sup>2</sup> .K | UNIT WEIGHT KG |
|--------------------|----------------------|--------------------------|-----------------------------|----------------|
| 900                | 1200                 | 946 x 1246               | 1.6                         | 49             |
| 1000               | 1000                 | 1046 x 1046              | 1.6                         | 45             |
| 1000               | 1500                 | 1046 x 1546              | 1.5                         | 65             |
| 1000               | 2000                 | 1046 x 2046              | 1.5                         | 84             |
| 1000               | 2500                 | 1046 x 2546              | 1.4                         | 101            |

## NOTES

### GLASS SPEC:

OUTER : 6mm CLEAR HST TOUGHENED GLASS + SANDBLAST BORDER FACE 1 + 1.1 LOW E COATING  
 CAVITY : 14mm ARGON FILLED + WARM EDGE SPACER  
 INNER : 8.8mm CLEAR LAMINATED SILICONE BONDED

LIGHT TRANSMISSION = 78 %  
 CENTRE PANE U VALUE = 1.1 W/m<sup>2</sup>.K  
 SOLAR G VALUE = 0.63  
 ACOUSTIC REDUCTION = 37 Rw dB

ROOFLIGHT ORDER SIZE = OVERALL FINISHED AND WEATHER KERB DIMS, INTERNAL OPENING SIZE IS NOT RELEVANT TO ROOFLAZE AT ORDER STAGE.

GLAZING CASSETTE SCREWED TO FRAME INTERNALLY.

GLASS BONDED TO FRAME WITH GLAZING SECURITY TAPE.

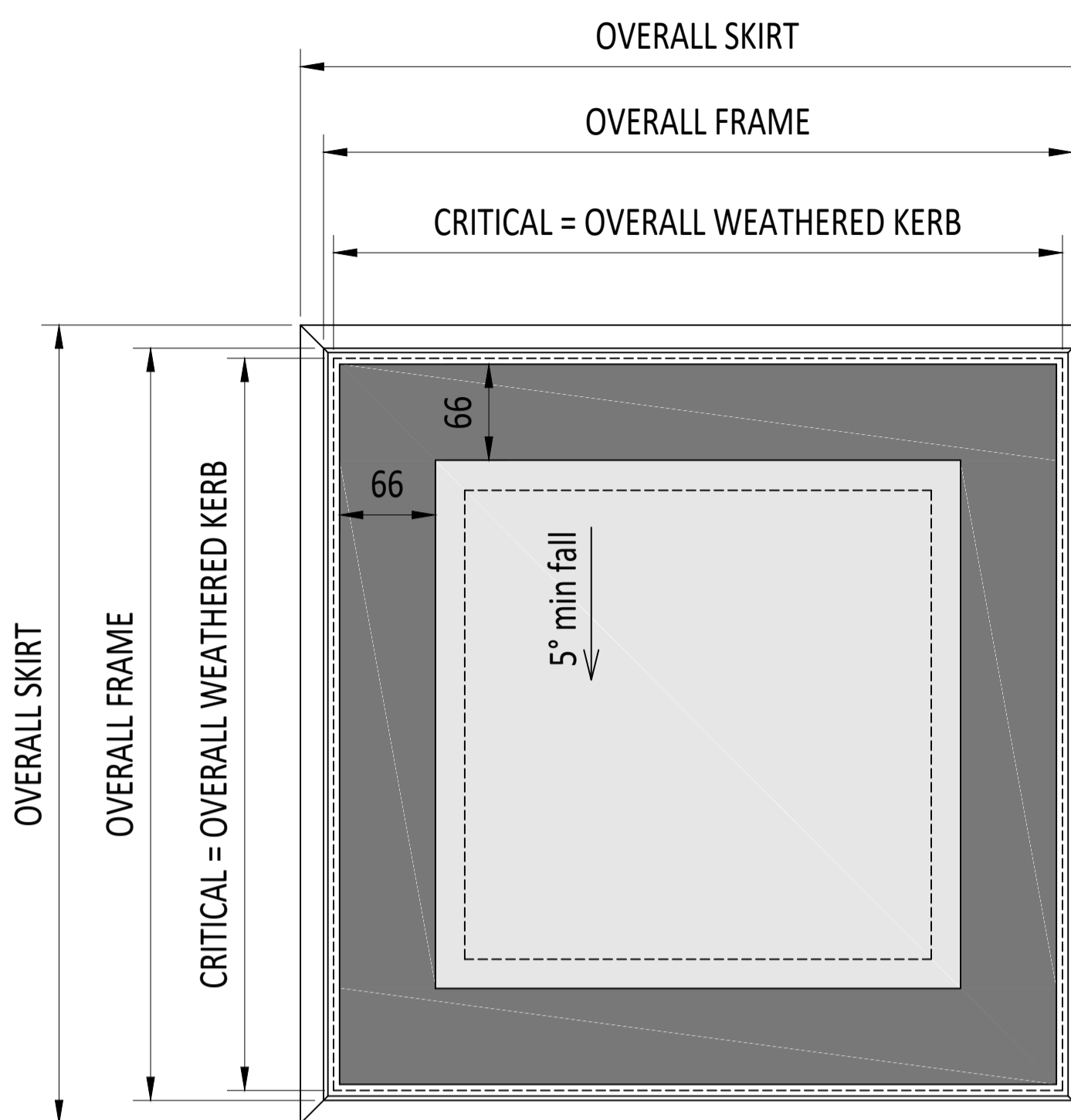
KERB DETAILS SHOWN INDICATIVE DETAILED DESIGN BY OTHERS.

MIN. FALL SHOWN TO HELP SHED WATER.

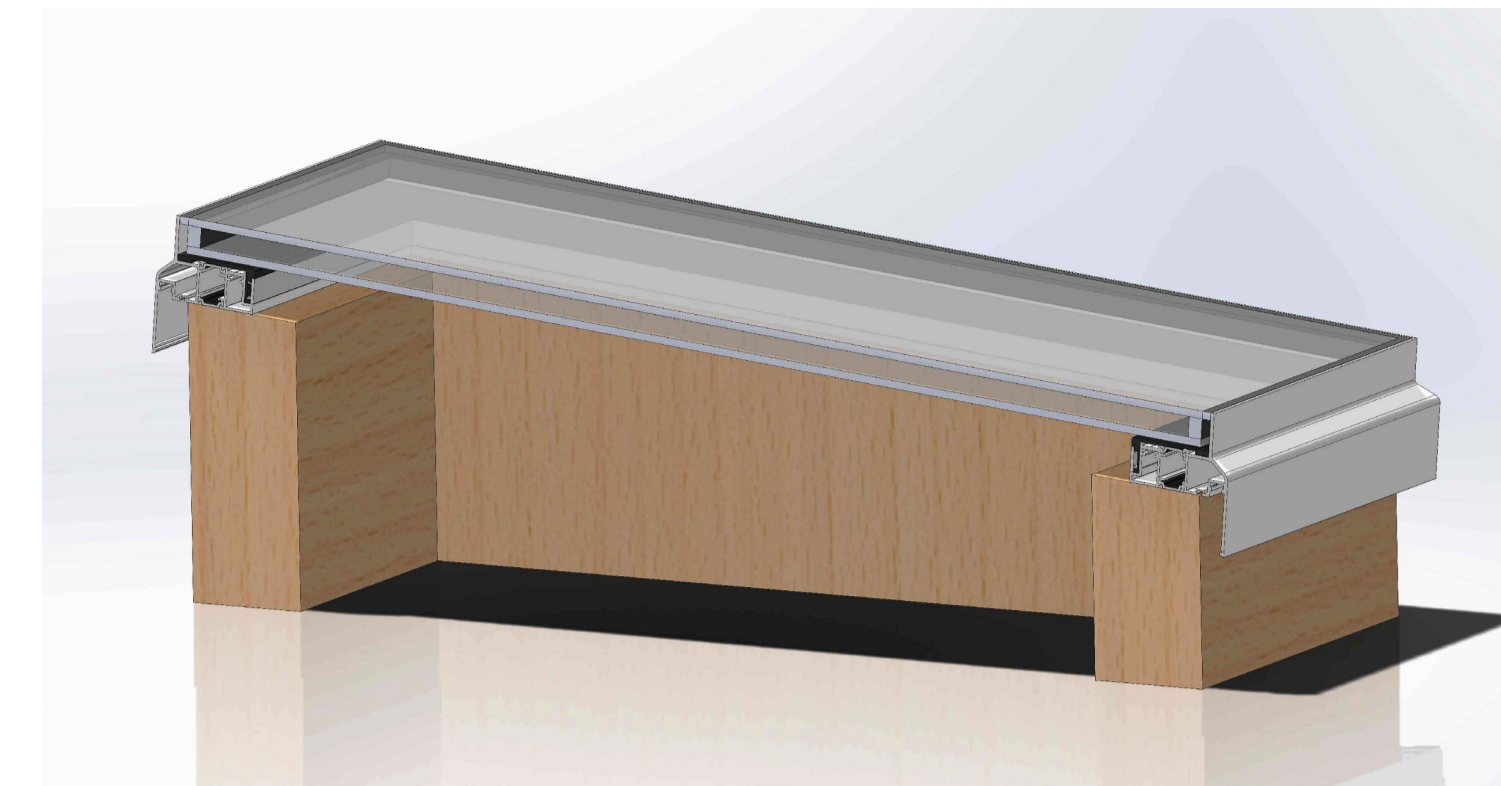
PRODUCT U-VALUE = AS LOW AS 1.4 W/m<sup>2</sup>.K (u-values are size dependant)

## NOTES

THESE ROOFLIGHTS HAVE RECEIVED THIRD PARTY ACCREDITATION FOR CERTISECURE STS202 AND ARE PART OF THE SECURED BY DESIGN POLICE INIATIVE SCHEME



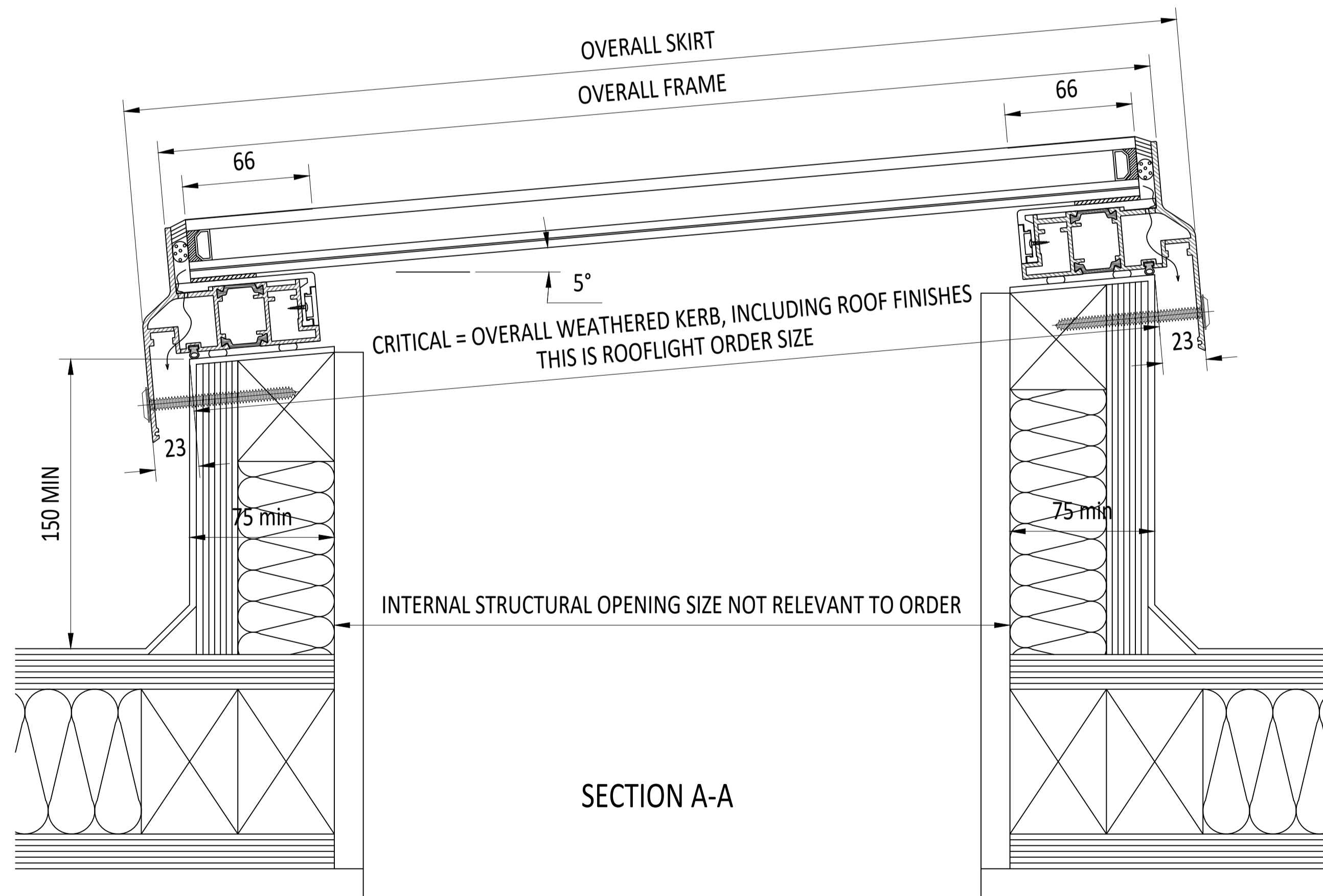
PLAN VIEW  
TRUE VIEW ON SLOPE  
TOUGHENED/ LAMINATED GLASS WITH BORDER



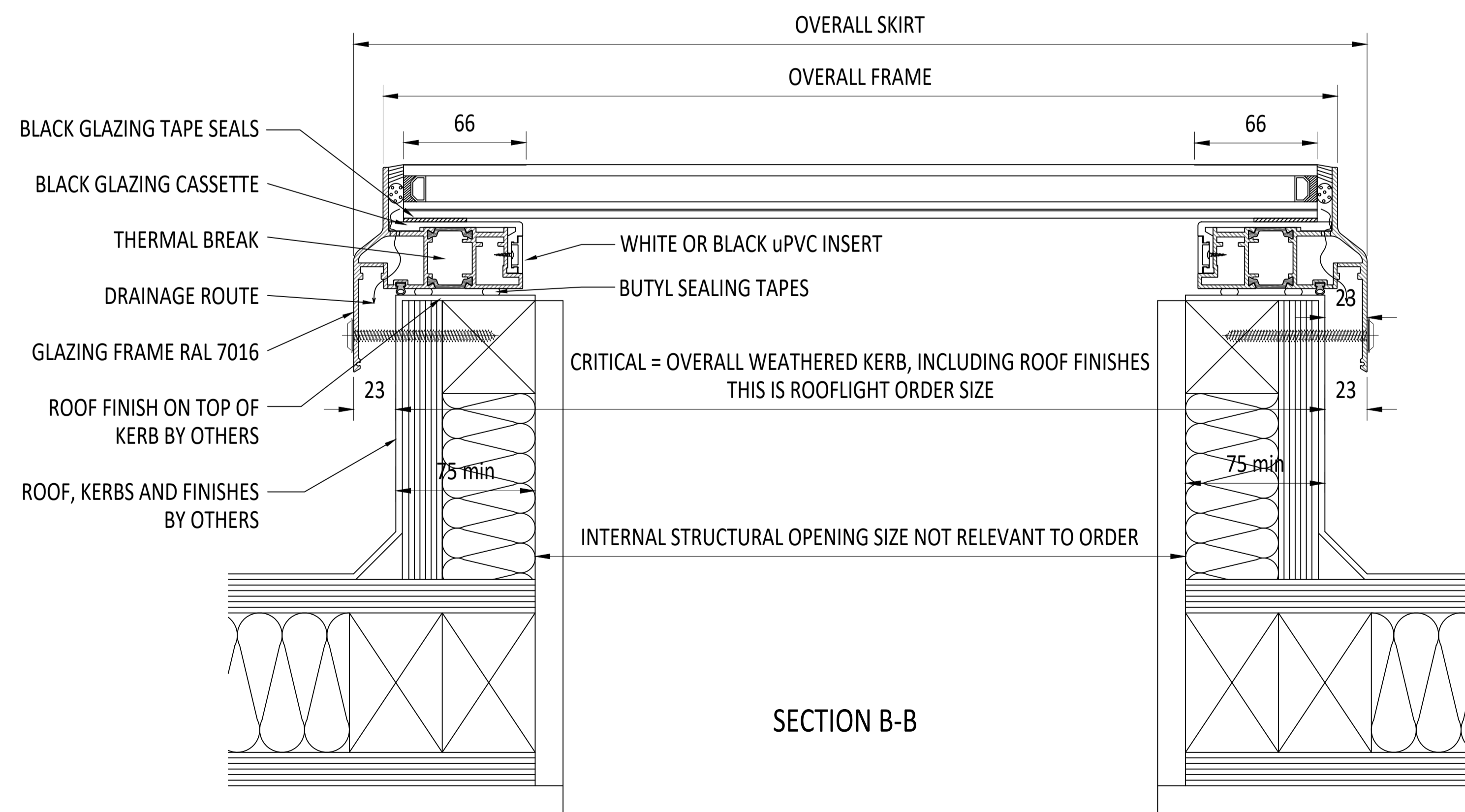
3D SECTION THROUGH KERB



THERMAL IMAGING OF FRAME



SECTION A-A



SECTION B-B

IF IN DOUBT ASK  
DO NOT SCALE

IT IS THE RESPONSIBILITY OF THE KERB DESIGNER TO ENSURE THE KERB WILL BE STRUCTURALLY ADEQUATE TO HOLD THE ROOFLIGHT. KERBS SHOWN ON ROOFLAZE DRAWINGS ARE FOR ILLUSTRATION PURPOSES ONLY.

Roofglaze would advise an installation with a minimum pitch of 5° for rooflight units to minimize water pooling. Whilst the product can be installed flat without detriment to the warrantee, Roofglaze cannot be held responsible for any excessive pooling of water to the surface of the rooflight post installation, if installed without an adequate fall.

THIS DRAWING MUST NOT BE COPIED OR PASSED TO A THIRD PARTY WITHOUT WRITTEN CONSENT FROM ROOFLAZE LIMITED.

CHECKED  
DATE  
DRAWN  
D. PUGH  
DATE  
08-01-2018

TOLERANCE UNLESS OTHERWISE STATED ±5  
DIMENSIONS IN MM  
SCALE  
1:2, 1:4 @ A1

MATERIAL  
ALUMINIUM + GLASS  
FINISH  
POLYESTER POWDER COATING RAL 7016 ANTHRACITE GREY, 70% GLOSS

| REV | AMENDMENTS | SIGNED | CHECKED | DATE |
|-----|------------|--------|---------|------|
|     |            |        |         |      |

Roofglaze Limited,  
11 Howard Road, Eaton Socon, St Neots, Cambs, PE19 8ET  
Telephone 01480 474797. Fax 01480 474774.  
E-mail technical@roofglaze.co.uk

TITLE:  
FIXED FLATGLASS PROTECT+  
STOCK ROOFLIGHTS



DRAWING N°:  
A1 RG-80-501-SBD  
SHEET 1