

# Walk-on Flatglass Rooflights

*A safe, modern and attractive daylighting solution for roof terraces, enabling the enhancement of both outdoor and indoor living spaces*



## Key Features & Benefits

- 15 year warranty\*
- External and Internal Walk-on rooflight options
- Contemporary, minimalist framework design
- Black (RAL 9005) painted border as standard (other painted border colours available)
- Ideal solution for introducing more natural daylight into basements and cellars
- Excellent thermal performance, achieving system U-values as low as 0.9 W/m<sup>2</sup>K with super Low-E coatings and specialist glass
- Quick and easy to install on-site

## Frame Specification

- The Fixed Flatglass rooflight frame is manufactured from extruded aluminium section to BS 1474, EN 12020-1:2001
- Polyamide thermal break within the glazing frame makes it fully thermally-broken and extremely thermally-efficient
- Polyester Powder Coated Aluminium to BS EN 12206-1:2004
- **RAL Colours:** Anthracite Grey (RAL 7016) frames on standard rooflights
- White (RAL 9010) and Black (RAL 9005) frames are also available as standard options
- Bespoke RAL colour options available

## Glass Specification

### Double Glazed:

**Outer:** 33mm, 39mm or 48mm clear toughened and laminated safety glass with painted border

**Cavity:** 16mm Argon filled with Swisspacer warm edge spacer silicone bonded

**Inner:** 6mm clear toughened or 13.5mm clear heat strengthened laminated safety glass

**Surface Etching available to provide slip-resistance to BS 7976-2**

**Designed to CWCT Class 0 (BS EN 1991-1-1: Actions on Structures)**

## Loading Options

### Residential specification glazing:

for up to 1.5kN/m<sup>2</sup> distributed and 2.0kN concentrated loads

### Commercial specification glazing:

for up to 4.0kN/m<sup>2</sup> distributed and 3.6kN concentrated loads

### Heavy Commercial specification glazing:

for up to 5.0kN/m<sup>2</sup> distributed and 4.5kN concentrated loads

## Design Loadings

**EN 1991-1-1 Categories:** A1, D2, C34

**Product Weight:** Min. 120 kg/m<sup>2</sup> (External Walk-on) / Min. 85 kg/m<sup>2</sup> (Internal Walk-on)

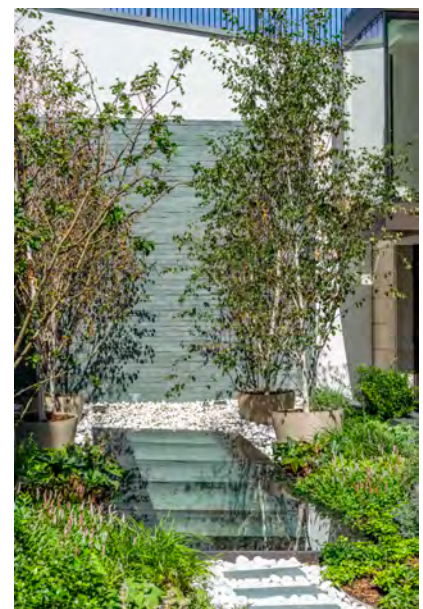
## Product Testing & Certification

- **Weather-tightness:** CWCT Class A4 Air leakage, Resistance to Wind Class E2400 Pa and Watertightness Class R7
- **Non-fragility:** CWCT Class 0 compliant rooflights
- **AA Fire-rated:** AA Designation (National Class) or BROF (T4) European Class and Euro Class A1 non-combustible

## Critical Kerb External Dimensions (Standard Glass Specification)

### Single Pane Walk-on rooflights:

- Min. Kerb Height:** 150mm (at the eaves end - External Walk-on)
- Min. Kerb Thickness:** 75mm (excluding finishes - External Walk-on)
- Min. End Bearing:** 50mm (Internal Walk-on)
- Max. Size:** 2500mm x 3200mm (dependent on glass specification)
- Min. Size:** 400mm x 400mm
- Min. Pitch:** 0°



# Flatglass

*A safe, modern and attractive daylighting solution for roof terraces, enabling the enhancement of both outdoor and indoor living spaces*

## British Standards Compliance

- BS 6375-1: Weathertightness
- BS EN 1026: Air Permeability
- BS EN 1027: Watertightness
- BS EN 12211: Wind Resistance
- BS EN 12206-1:2004: Polyester Powder Coating (External Walk-on)

## Bespoke Glazing Options

- Privacy Glass
- Body Tinted
- Acoustic Laminate
- Easy-clean Coatings (Ritec)

## Product Variations

- Multi-pane Walk-on rooflights with silicone jointed glazing for a flush outer surface (see Multi-section Flatglass data sheet or the Roofglaze website for more details)
- Circular, elliptical and bespoke shaped rooflights available

## Wall Abutment Details (External Walk-on rooflights):

- Head Abutments
- Verge Abutments
- Head and Verge Abutments up to three sides

## Rooflight Performance

Building Regulations (E&W) Approved Document L compliant design to achieve low U-values

**U-values:** As low as 0.9 W/m<sup>2</sup>K

**G-values:** As low as 0.33

**Light Transmission:** Up to 71%

## Rooflight Cleaning & Maintenance

All of our Flatglass rooflights can be supplied with an easy-clean coating, the **Ritec ClearShield** system provides an efficient solution to greatly reduce the need for cleaning

## 'Non-stick', easy-clean rooflight protection provides:

- Reduced cleaning time, effort and frequency
- Keeps rooflights looking like new, staying cleaner for significantly longer
- Resists glass staining and contamination from tree sap, bird droppings, traffic pollution and general dirt
- Helps to maintain your Window Energy Rating
- More daylight leads to enhanced well-being

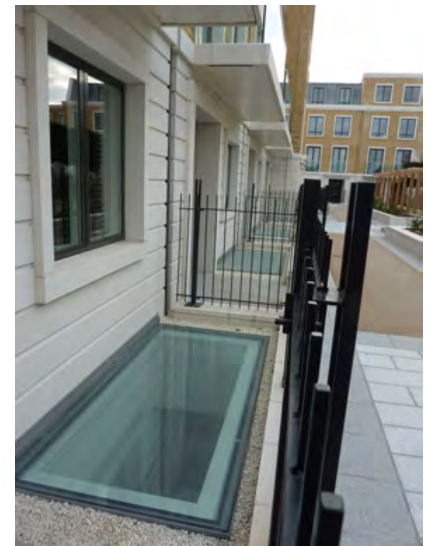
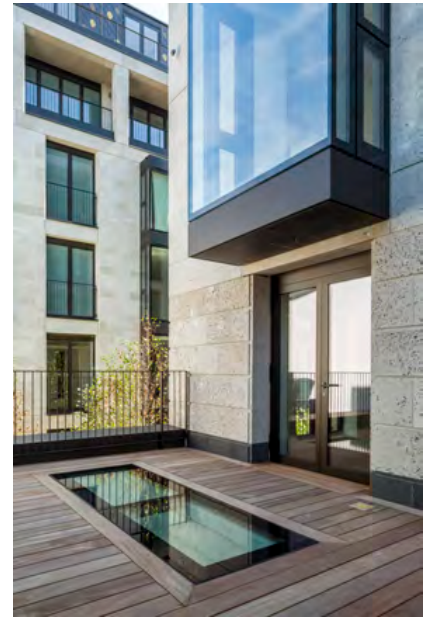
## Get in touch for Technical and Estimating Advice:

T: 01480 474 797 | W: [www.roofglaze.co.uk](http://www.roofglaze.co.uk)

E: [rgrestimating@roofglaze.co.uk](mailto:rgrestimating@roofglaze.co.uk)

## Roofglaze Ltd

11 Howard Road  
Eaton Socon  
St Neots  
Cambridgeshire  
PE19 8ET



# Roofglaze